



# RHINO

## Truck and Trailer Product Catalogue

VERSION 2

[rhinoguards.co.nz](http://rhinoguards.co.nz)  
[rhinoguards.com.au](http://rhinoguards.com.au)



Plastic that can handle the pressure.



The plastic guards with the built-in sunscreen.



Our stainless guards look amazing, and they are.



Aero is Everything.



# RHINO

## Our Purpose

To maximise transport performance  
for our customers' love of trucking

### DESIGNED AND BUILT FOR THE TOUGHEST TRUCKING CONDITIONS.

New Zealand can be a pretty harsh, relentless environment. It's wet. It's muddy. It's freezing. It's hot. It's wet. It's dusty. Our notoriously changeable climate is hard on trucks and equipment. It's the perfect place to design and develop high-performance mudguards. RHINO was founded to give trucking operators tougher, more durable mud guard systems - guards that would perform on the road, and the balance sheet. RHINO guards are engineered to handle what the road throws at them. And they look amazing.

### YOU GET WHAT WE PAY FOR.

RHINO guards are made from premium quality materials. Our mudguards may cost a little more, but they're a smart choice. Choosing RHINO can mean spending less on repairs, replacements and maintenance, which can improve productivity for both fleets and drivers.

### GOOD ENOUGH ISN'T ENOUGH FOR RHINO.

RHINO has a relentless R & D programme, with a focus on new product innovation and material improvements. We test in our lab, but also out in the real world, putting new products through punishing extremes of conditions like temperature, impact and chemicals.

### MORE SIZES, FOR MORE WHEELS, FOR PERFORMANCE.

RHINO has an unparalleled range of sizes to match most wheel and tyre profiles. 14 sizes and counting. This enables much more precise fitting and provides better protection for your rig.

### CUSTOMISE YOUR HEART OUT.

RHINO is known for its brightly coloured plastic guards. You can't miss them. Made from a high performance polyethylene with in-built UV8 protection, they are tough. They don't crack or fade as fast as others. And they look stunning. But some people prefer shiny metal. So RHINO also offers an extensive range of aluminium and stainless steel mudguards, machined and shaped for strength and technical performance.

We also make and supply a full range of system accessories.

### WE WON'T LET YOU DOWN. WE CAN'T.

Trucking is deeply embedded RHINO's DNA. We don't just make great guards for trucks, we know the industry inside-out. We understand what matters to drivers and fleet operators, truck and trailer builders and buyers. Our team will work with yours to ensure every detail is right, and delivered on time and on spec.

### SUSTAINABILITY. LIKE YOU, WE'RE WORKING ON IT.

RHINO is committed to ESG principles, and we're making steady steps towards more sustainable products and processes. Almost all of our products and packaging are recyclable, and we even offer mudguards made from recycled plastic. That's pretty circular!



[mudguards.co.nz/about-us](https://mudguards.co.nz/about-us)



**CONTACT AUSTRALIA**  
[sales@rhinoguards.com.au](mailto:sales@rhinoguards.com.au)  
+61 2 7908 7961  
[rhinoguards.com.au](https://rhinoguards.com.au)

### CONTACT NEW ZEALAND

[sales@mudguards.co.nz](mailto:sales@mudguards.co.nz)  
+64 7 347 9363  
[rhinoguards.co.nz](https://rhinoguards.co.nz)



# Quick Sizing Guide

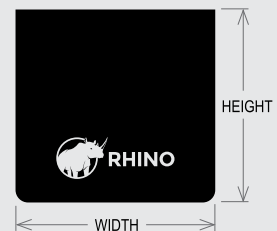
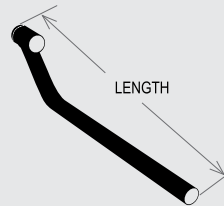
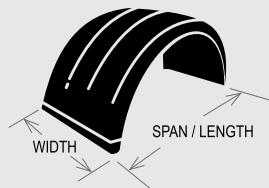
With decades of industry experience we have learned a lot about the sizing of tyres, wheels, mudguards, mudflaps and lots more. The industry is always changing so for the most up to date sizing information please go to our website or refer to the [RHINO TYRE SIZE GUIDE](#) online.



[mudguards.co.nz/  
rhino-tyre-size-guide](http://mudguards.co.nz/rhino-tyre-size-guide)

## To ensure the best fit:

We recommend the following for each product. Be sure to add the desired amount of clearance between the wheel, chassis or ground. Less if you want a close fit, more if you require more space. You can use this to select the preferred RHINO product.



### GUARDS

Measure the span and width of the wheels to give you the span and width of the mudguard

### CHASSIS POLES

Measure the distance from the chassis to the outside of the guards to give you the length of the chassis pole

### MUDFLAPS

Measure the width of guards and height / depth to the ground to give the width and height of the mudflap

## Freight

RHINO works with our trusted freight companies to ensure our products get to you in the most timely and cost-effective manner, wherever you are in NZ, Australia or around the world. All deliveries have digital track and trace abilities.

Orders are packed to ensure products are protected/stable during transit and freight costs are minimised. Export pallets are used for international orders.

### SMALL ORDERS

Small orders are packed with robust packaging that is durable and recyclable. Packaging is either plastic (stream 4 recycling) or cardboard.

Pack sizes meet weight limits set from freight companies and our maximum internal weight limit of 20kg per pack.



### LARGE ORDERS

Large orders are packed on a pallet to maximise freight efficiencies.

Depending on the size of the order, the type of guards and the freight destination, strapping may be applied.





# RHINO

# Mudguard Range

RHINO Mudguards are available in three material types with a range of designs.

Ribbed

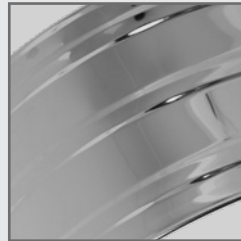
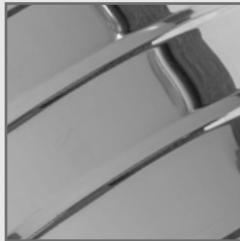
Smooth

Rod Edge

PLASTIC



STAINLESS STEEL



ALUMINIUM



Access key pages and detailed information using the website links below or by scanning the QR code.

### ONLINE SERVICES



[mudguards.co.nz/  
online-services](http://mudguards.co.nz/online-services)

### COLOUR CHART



[mudguards.co.nz/  
color-chart](http://mudguards.co.nz/color-chart)

### TYRE SIZE GUIDE



[mudguards.co.nz/  
rhino-tyre-size-guide](http://mudguards.co.nz/rhino-tyre-size-guide)

### RESOURCES



[mudguards.co.nz/  
resources](http://mudguards.co.nz/resources)

### PLASTIC DONE RIGHT



18 colour options on selected plastic mudguards, giving businesses more freedom to customise their fleet or brand presence.



Built to last, all RHINO plastic mudguards are UV8-rated, offering superior colour fade resistance.



Selected plastic mudguards incorporate recycled materials, offering businesses a more sustainable option.





**Designed and built for the toughest trucking conditions.**

**RHINO QUALITY AND PERFORMANCE IS WORTH THE INVESTMENT.**

**RHINO guards are a premium product, but the upfront cost can be more than made up for by the long term benefits and operational savings. Choosing RHINO can mean spending less on repairs, replacements and maintenance, improving productivity for both trucks, drivers and fleets.**

**TESTING MUDGUARDS**

In 2020 we set out to test just how strong our mudguards are. We used a standard method for testing the strength of plastic. This involves dropping a standardised metal dart from various heights on to plastic so see how much force the plastic can tolerate. We undertook this test with hundreds of samples with temperature controls to ensure reliable results.

**No RHINO mudguards cracked, compared to 81% of Injection Moulded mudguards.**



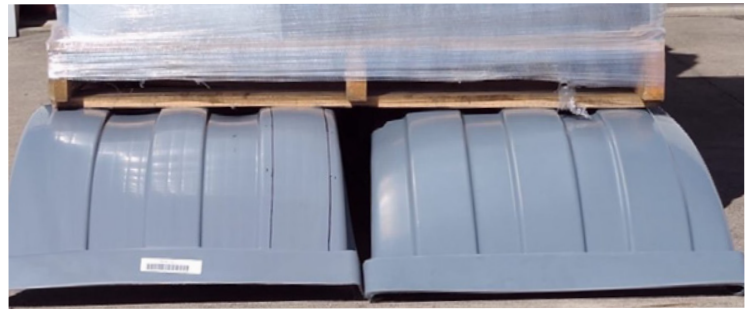
*Injection moulded mudguard cracking in half*



*RHINO mudguard sample with small hole*

**TESTING IN THE REAL WORLD**

We didn't want to limit our tests to the laboratory as we know that mudguards are exposed to every situation imaginable in the real world. To undertake this test we used a forklift and lowered 1 tonne (2,200 lbs) of weight on a pallet onto a RHINO guard and a popular injection moulded guard. We did this at the same time to ensure both guards experienced the same conditions (see photo below). This would be equivalent to some common occurrences like a pallet being dropped during loading/unloading or a log coming loose from a loader.



*Injection moulded mudguard cracked*



*RHINO mudguard sample*

**RESULTS**

The injection moulded guards didn't perform well - they cracked on both sides. This would mean the mudguard would not be road-worthy and the truck or trailer would be off to the repair shop.



*mudguards.co.nz/  
rhino-plastic-guards-are-top-performers*



## The plastic guards with the built-in sunscreen

**RHINO's plastic guards are moulded from a polymer which includes a UV stabiliser to protect from sun damage. The pigments we use also have the highest UV rating possible - UV8 - giving the guards outstanding resistance to colour fade.**



*Popular competitor mudguard in Australia on a truck with one faded guard (left) and one new guard not yet faded (right). Notice the huge difference in colour between faded and unfaded.*



*Trailer with RHINO Guards (9 years old); the colour has minimal fading.*

RHINO mud guards are Rotationally Moulded using high grade LLDPE specifically designed for the rotational moulding process. This material is supplied from the polymer manufacturer with a high quality UV and anti-oxidant package included into the base polymer. The polymer used in RHINO mud guards has been tested by exposing the material to high levels of UV at a similar wavelength as the sun. This test is also conducted at an increased temperature and humidity level to increase the demand on the UV protection. This test exposes the samples for at least 8000 hours before they are tested to ensure that sufficient physical properties of the material remain. This material is then given the rating UV8. There is no direct calculation to state how long a plastic part that has been tested to UV8 will last in service. However, the standard UV protection for plastic water tanks is UV8 so it would be reasonable to expect these parts to last for a number of years before UV degradation results in failure.

Colour is then added by compounding pigments into the base polymer. These pigments have high heat stability and excellent light fastness. Pigment light fastness is measured on the Blue Wool Scale. This scale has ratings from 1 to 8; 1 being low resistance to fading and 8 being high resistance to fading. Pigments used in the rotational moulding process have a high rating, usually 8 which is the highest rating on this scale. This means that significant colour change and fading is not expected over the life of the mudguard.



[mudguards.co.nz/  
rhino-guards-uv-  
performance](https://mudguards.co.nz/rhino-guards-uv-performance)



The full range of RHINO plastic mudguards which are known for high performance and safety.

Mudguards are rotationally moulded from virgin high grade polyethylene or recycled plastic. The range covers standard duals, singles, tandems, self steer, front steer and quarter guards. Available in a range of sizes and in 18 colours to suit for fleet colours. These are tough mudguards, designed for extreme UV and weather conditions.



[mudguards.co.nz/](http://mudguards.co.nz/)  
**colour-chart**

\*Please see our separate **RHINO COLOUR GUIDE**

## SINGLE / SUPER SINGLE



| PART # | MEASUREMENT |            |             |             | TYRE                   |
|--------|-------------|------------|-------------|-------------|------------------------|
|        | SPAN (MM)   | WIDTH (MM) | RADIUS (MM) | WEIGHT (KG) |                        |
| PL1204 | 1200        | 430        | 600         | 5           | Single or super single |

## MEGA SINGLE



| PART #  | MEASUREMENT |            |             |             | TYRE             |
|---------|-------------|------------|-------------|-------------|------------------|
|         | SPAN (MM)   | WIDTH (MM) | RADIUS (MM) | WEIGHT (KG) |                  |
| PL10548 | 1050        | 480        | 525         | 4.3         | Suit Mega Single |

## QUARTER



| PART #    | MEASUREMENT |            |             |             | TYRE  |
|-----------|-------------|------------|-------------|-------------|-------|
|           | SPAN (MM)   | WIDTH (MM) | RADIUS (MM) | WEIGHT (KG) |       |
| PL12063/3 | -           | 630        | 600         | 2           | Duals |

## LIGHT TRUCK



| PART #   | MEASUREMENT |            |             |             | TYRE     |
|----------|-------------|------------|-------------|-------------|----------|
|          | SPAN (MM)   | WIDTH (MM) | RADIUS (MM) | WEIGHT (KG) |          |
| PL0905 * | 900         | 520        | 450         | 4           | 15", 16" |
| RV9025 * | 900         | 250        | 450         | 2.5         | 16"      |

\*Only available in black

PLASTIC

STAINLESS

ALUMINIUM

CHASSIS  
POLES

MOUNTING  
BRACKETS

MUDFLAPS

ACCESSORIES



## DUALS



\*Please see our separate **RHINO COLOUR GUIDE**

| PART #  | MEASUREMENT |            |             |             | TYRE                |
|---------|-------------|------------|-------------|-------------|---------------------|
|         | SPAN (MM)   | WIDTH (MM) | RADIUS (MM) | WEIGHT (KG) |                     |
| PL0925  | 950         | 540        | 475         | 4           | 15", 16", 17" duals |
| PL10058 | 1000        | 580        | 500         | 4.3         | 19.5" duals         |
| PL1056  | 1050        | 630        | 525         | 5.3         | Low Profile         |
| PL12063 | 1200        | 630        | 600         | 6           | 11R 22.5" Duals     |
| PL12067 | 1200        | 670        | 600         | 7.3         | Duals               |



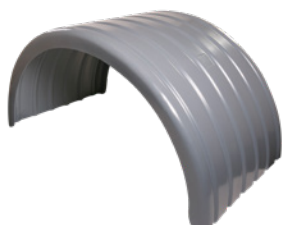
## SELF STEER



## TANDEM



## SPREADER



\*Please see our separate **RHINO COLOUR GUIDE**

| PART #       | MEASUREMENT |            |             |             | TYRE                              |
|--------------|-------------|------------|-------------|-------------|-----------------------------------|
|              | SPAN (MM)   | WIDTH (MM) | RADIUS (MM) | WEIGHT (KG) |                                   |
| PL19.5 CESKI | 1250        | 580        | 500         | 5.7         | Self Steer 19.5"                  |
| PLLPCESKI    | 1280        | 630        | 525         | 6.5         | Self Steer Low Profile            |
| PLMEGCES     | 1250        | 480        | 525         | 4.5         | Self-Steer Single or Super Single |
| PLSTDCESKI   | 1450        | 630        | 600         | 6.5         | Self Steer 11R 22.5"              |

PLASTIC

STAINLESS

ALUMINIUM

CHASSIS  
POLES

MOUNTING  
BRACKETS

MUDFLAPS

ACCESSORIES

| PART # | MEASUREMENT |            |             |             | TYRE      |
|--------|-------------|------------|-------------|-------------|-----------|
|        | SPAN (MM)   | WIDTH (MM) | RADIUS (MM) | WEIGHT (KG) |           |
| PL2506 | 2500        | 630        | 600         | 12.5        | 11R 22.5" |
| PL2606 | 2600        | 630        | 600         | 12.5        | 11R 22.5" |

| PART #    | MEASUREMENT |            |             |             | TYRE     |
|-----------|-------------|------------|-------------|-------------|----------|
|           | SPAN (MM)   | WIDTH (MM) | RADIUS (MM) | WEIGHT (KG) |          |
| PLL1408 * | 1400        | 770        | 700         | 14          | Spreader |

\*Only available in black and grey



## STAINLESS STEEL INSERTS

Stainless Steel Inserts / Dress Strips are ideal to add some shine to your plastic-coloured guard. Each Insert is made of our high quality 1.2mm Stainless Steel and cut to the length to suit the guard. Inserts have four holes punched (two at each end) and come supplied with rivets and washers to enable easy installation.

**\*\* note the number of strips for each guard required in the table below.**

| PART #              | PLASTIC GUARD PART# | STRIPS PER GUARD     |
|---------------------|---------------------|----------------------|
| STSTINSERT0925      | PL0925              | 2 x strips per guard |
| STSTINSERT10058     | PL10058             | 2 x strips per guard |
| STSTINSERT10548     | PL10548             | 1 x strip per guard  |
| STSTINSERT1056      | PL1056              | 2 x strips per guard |
| STSTINSERT1204      | PL1204              | 1 x strip per guard  |
| STSTINSERT12063     | PL12063             | 2 x strips per guard |
| STSTINSERT12067     | PL12067             | 2 x strips per guard |
| STSTINSERT19.5CESKI | PL19.5 CESKI        | 2 x strips per guard |
| STSTINSERTPLLPCESKI | PLLPCESKI           | 2 x strips per guard |
| STSTINSERTMEGCES    | PLMEGCES            | 1 x strip per guard  |
| STSTINSERTSTDCESKI  | PLSTDCESKI          | 2 x strips per guard |
| STSTINSERTQTR       | PL12063/3           | 2 x strips per guard |



### Want your truck featured by RHINO?

Show off your latest truck or trailer build.

Upload your photos to our website today!



[mudguards.co.nz/customer-images](https://mudguards.co.nz/customer-images)



## SPRAY SUPPRESSANT

Flexible spray suppressant available in 100mm length is standard. Sold in 1800mm kits or by the metre. Fits inside the F Clip or H Clip.

### SPRAY SUPPRESSANT BRUSH



| PART # | NAME                         |
|--------|------------------------------|
| SS100  | SPRAY SUPPRESSANT 100mm wide |

### SPRAY SUPPRESSANT H ROUND

Aluminium extruded "H" Round profile that has been rolled for parallel mounting flexible spray suppressant to guards.

Option H in common guard sizes, 20mm wide:



| PART #       | NAME   |
|--------------|--|
| SSHROUND1000 | SPRAY SUPPRESSANT H ROUND FIT 1000 SPAN (mm) GUARD |
| SSHROUND1050 | SPRAY SUPPRESSANT H ROUND FIT 1050 SPAN (mm) GUARD |
| SSHROUND1100 | SPRAY SUPPRESSANT H ROUND FIT 1100 SPAN (mm) GUARD |
| SSHROUND1200 | SPRAY SUPPRESSANT H ROUND FIT 1200 SPAN (mm) GUARD |

### SPRAY SUPPRESSANT H



Aluminium extruded "h" profile for parallel mounting flexible spray suppressant, 20 mm wide.

Options include the following:

| PART #  | NAME                                       |
|---------|--|
| SSHCLIP | SPRAY SUPPRESSANT H CLIPS (PACK OF 9)      |
| SSKIT-H | SPRAY SUPPRESSANT BRUSH + H CLIPS          |
| SSH3000 | SPRAY SUPPRESSANT H CLIP - 3 METERS LENGTH |

### SPRAY SUPPRESSANT F



Aluminium extruded "F" profile for parallel mounting flexible spray suppressant, 20 mm wide.

Options include the following:

| PART #  | NAME                                       |
|---------|--|
| SSFCLIP | SPRAY SUPPRESSANT F CLIPS (PACK OF 9)      |
| SSKIT-F | SPRAY SUPPRESSANT BRUSH + F CLIPS          |
| SSF3000 | SPRAY SUPPRESSANT F CLIP - 3 METERS LENGTH |



# STAINLESS

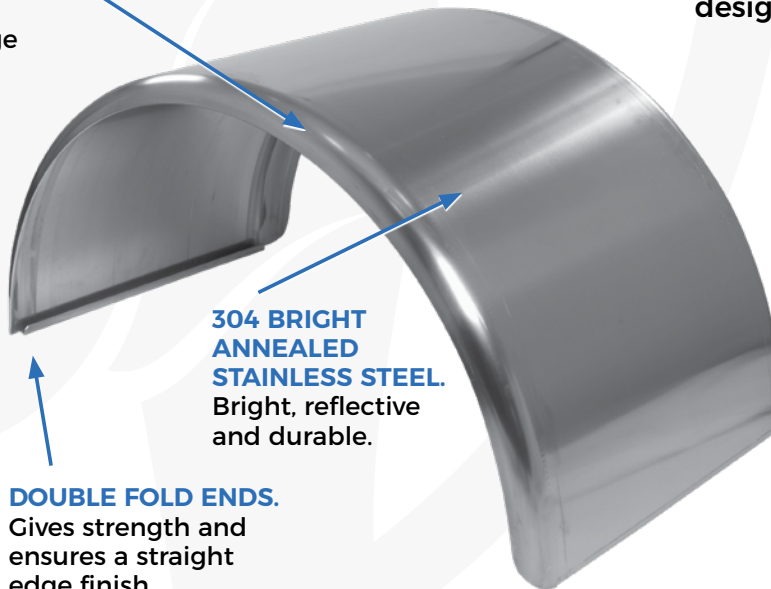
ENGINEERED FOR STRENGTH AND DURABILITY



Our stainless guards look amazing, and they are.

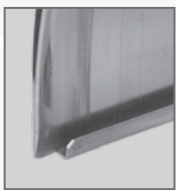
**RIPPLE-FREE EDGE.**

High quality ripple free edge finish stands out from the crowd.



**304 BRIGHT ANNEALED STAINLESS STEEL.**  
Bright, reflective and durable.

**DOUBLE FOLD ENDS.**  
Gives strength and ensures a straight edge finish.



Three material types with a range of designs:

**RIBBED**



**SMOOTH**



**ROD EDGED**





## RIBBED STAINLESS

Ribs for extra strength and style.

### SINGLE RIBBED STAINLESS



| PART #   | MEASUREMENT |            |             |             | TYRE                   |
|----------|-------------|------------|-------------|-------------|------------------------|
|          | SPAN (MM)   | WIDTH (MM) | RADIUS (MM) | WEIGHT (KG) |                        |
| STR11048 | 1100        | 480        | 550         | 8.8         | Low Profile            |
| STR12048 | 1200        | 480        | 600         | 9.0         | Single or Super Single |

### DUAL RIBBED STAINLESS

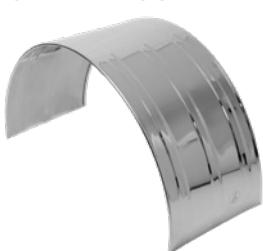


| PART #   | MEASUREMENT |            |             |             | TYRE              |
|----------|-------------|------------|-------------|-------------|-------------------|
|          | SPAN (MM)   | WIDTH (MM) | RADIUS (MM) | WEIGHT (KG) |                   |
| STR10058 | 1000        | 580        | 500         | 9.4         | 19.5" Duals       |
| STR10563 | 1050        | 630        | 525         | 9.6         | Low Profile Duals |
| STR11063 | 1100        | 630        | 550         | 9.6         | Low Profile Duals |
| STR12063 | 1200        | 630        | 600         | 10.2        | 11R 22.5"         |

## ROD EDGED STAINLESS

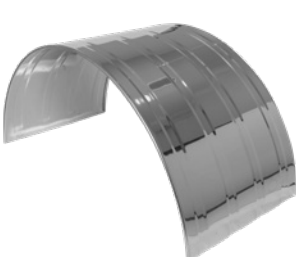
Lightly pressed ribs with a 10mm alloy rod rolled into the edges for extra strength.

### SINGLE ROD-EDGED STAINLESS



| PART #   | MEASUREMENT |            |             |             | TYRE                   |
|----------|-------------|------------|-------------|-------------|------------------------|
|          | SPAN (MM)   | WIDTH (MM) | RADIUS (MM) | WEIGHT (KG) |                        |
| STST1104 | 1100        | 475        | 550         | 7.2         | Low Profile Single     |
| STST1204 | 1200        | 475        | 600         | 7.2         | Single or Super Single |

### DUALS ROD-EDGED STAINLESS



| PART #   | MEASUREMENT |            |             |             | TYRE              |
|----------|-------------|------------|-------------|-------------|-------------------|
|          | SPAN (MM)   | WIDTH (MM) | RADIUS (MM) | WEIGHT (KG) |                   |
| STST1006 | 1000        | 625        | 500         | 8.6         | 19.5" Duals       |
| STST1056 | 1050        | 625        | 525         | 8.6         | Low Profile Duals |
| STST1106 | 1100        | 625        | 550         | 9.6         | Low Profile Duals |
| STST1206 | 1200        | 625        | 600         | 9.6         | Duals             |



## SMOOTH STAINLESS

Smooth stainless finish.

### SINGLE SMOOTH STAINLESS



| PART #   | MEASUREMENT |            |             |             | TYRE                   |
|----------|-------------|------------|-------------|-------------|------------------------|
|          | SPAN (MM)   | WIDTH (MM) | RADIUS (MM) | WEIGHT (KG) |                        |
| STS11048 | 1100        | 480        | 550         | 8.8         | Low Profile Single     |
| STS12048 | 1200        | 480        | 600         | 9.0         | Single or Super Single |

### DUAL SMOOTH STAINLESS



| PART #   | MEASUREMENT |            |             |             | TYRE              |
|----------|-------------|------------|-------------|-------------|-------------------|
|          | SPAN (MM)   | WIDTH (MM) | RADIUS (MM) | WEIGHT (KG) |                   |
| STS10058 | 1000        | 580        | 500         | 9.4         | 19.5" Duals       |
| STS10563 | 1050        | 630        | 525         | 9.6         | Low Profile Duals |
| STS11063 | 1100        | 630        | 550         | 9.6         | Low Profile Duals |
| STS12063 | 1200        | 630        | 600         | 10.2        | 11R 22.5" Duals   |

### SELF STEER SMOOTH STAINLESS



*\*Dual Self Steer shown*

| PART #        | MEASUREMENT |            |             |             | TYRE                              |
|---------------|-------------|------------|-------------|-------------|-----------------------------------|
|               | SPAN (MM)   | WIDTH (MM) | RADIUS (MM) | WEIGHT (KG) |                                   |
| STS11048-200F | 1300        | 480        | 550         | 9.2         | Self Steer Low Profile Single     |
| STS12048-200F | 1400        | 480        | 600         | 9.5         | Self Steer Single or Super Single |
| STS10058-200F | 1200        | 580        | 500         | 9.2         | Self Steer 19.5" Duals            |
| STS11063-200F | 1300        | 630        | 550         | 10.6        | Self Steer Low Profile Duals      |
| STS12063-200F | 1400        | 630        | 600         | 11.3        | Self Steer 11R 22.5" Duals        |

### HALF TANDEM SMOOTH STAINLESS



| PART #  | MEASUREMENT |            |             |             | TYRE  |
|---------|-------------|------------|-------------|-------------|-------|
|         | SPAN (MM)   | WIDTH (MM) | RADIUS (MM) | WEIGHT (KG) |       |
| STSH606 | 1500        | 630        | -           | 10.2        | Duals |

*Half tandems can be overlapped and bolted together to form tandem*

### TANDEM SMOOTH STAINLESS



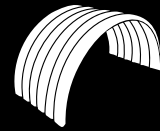
| PART #     | MEASUREMENT |            |             |             | TYRE  |
|------------|-------------|------------|-------------|-------------|-------|
|            | SPAN (MM)   | WIDTH (MM) | RADIUS (MM) | WEIGHT (KG) |       |
| STSTND2606 | 2600        | 630        | 600         | 20.4        | Duals |

*Modular tandem made up of two half tandems. Requires drilling and assembly*

### QUARTER SMOOTH STAINLESS



| PART #   | MEASUREMENT |            |             |             | TYRE  |
|----------|-------------|------------|-------------|-------------|-------|
|          | SPAN (MM)   | WIDTH (MM) | RADIUS (MM) | WEIGHT (KG) |       |
| STSQT606 | -           | 630        | 600         | 3.6         | Duals |



## RIBBED TRUCK GUARDS

2mm thick aluminium, both edges are rolled over to 30mm and then doubled over for extra strength and safety.

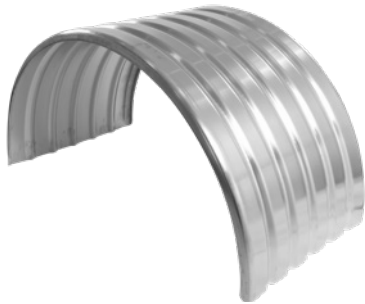
### SINGLE RIBBED ALUMINIUM



| PART #   | MEASUREMENT |            |             |             | TYRE                   |
|----------|-------------|------------|-------------|-------------|------------------------|
|          | SPAN (MM)   | WIDTH (MM) | RADIUS (MM) | WEIGHT (KG) |                        |
| AL1204 * | 1200        | 400        | 600         | 4.8         | Single or Super Single |
| AL1205 * | 1200        | 500        | 600         | 6.1         | Single or Super Single |

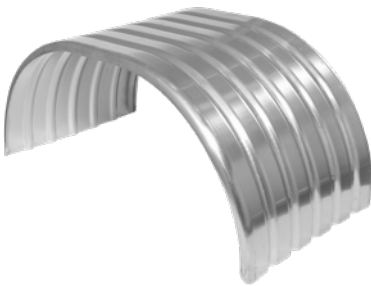
*\*One edge is rolled*

### DUAL RIBBED ALUMINIUM



| PART # | MEASUREMENT |            |             |             | TYRE              |
|--------|-------------|------------|-------------|-------------|-------------------|
|        | SPAN (MM)   | WIDTH (MM) | RADIUS (MM) | WEIGHT (KG) |                   |
| AL0906 | 900         | 610        | 450         | 5.5         | 16" Duals         |
| AL0956 | 950         | 610        | 475         | 5.7         | 17" Duals         |
| AL1006 | 1000        | 610        | 500         | 6.0         | 19.5" Duals       |
| AL1056 | 1050        | 610        | 525         | 6.2         | Low Profile Duals |
| AL1106 | 1100        | 610        | 550         | 6.8         | Low Profile Duals |
| AL1206 | 1200        | 610        | 600         | 7.1         | 11R 22.5" Duals   |

### SELF STEER RIBBED ALUMINIUM



| PART #       | MEASUREMENT |            |             |             | TYRE                         |
|--------------|-------------|------------|-------------|-------------|------------------------------|
|              | SPAN (MM)   | WIDTH (MM) | RADIUS (MM) | WEIGHT (KG) |                              |
| AL 1000-200F | 1200        | 610        | 500         | 7.0         | Self Steer 19.5" Duals       |
| AL 1100-200F | 1300        | 610        | 550         | 7.9         | Self Steer Low Profile Duals |
| AL 1200-200F | 1400        | 610        | 600         | 8.0         | Self Steer 11R 22.5" Duals   |

### TANDEM RIBBED ALUMINIUM



| PART #   | MEASUREMENT |            |             | TYRE                |
|----------|-------------|------------|-------------|---------------------|
|          | SPAN (MM)   | WIDTH (MM) | RADIUS (MM) |                     |
| AL2306   | 2300        | 610        | 600         | Tandem 1100 centres |
| AL2406   | 2400        | 610        | 600         | Tandem 1200 centres |
| AL2466   | 2460        | 610        | 600         | Tandem 1260 centres |
| AL2505 * | 2500        | 500        | 600         | Tandem 1300 centres |
| AL2506   | 2500        | 610        | 600         | Tandem 1300 centres |
| AL2566   | 2560        | 610        | 600         | Tandem 1360 centres |
| AL2606   | 2600        | 610        | 600         | Tandem 1400 centres |
| AL2706   | 2700        | 610        | 600         | Tandem 1500 centres |
| AL2806   | 2800        | 610        | 600         | Tandem 1600 centres |

*\*One edge is rolled*

PLASTIC

STAINLESS

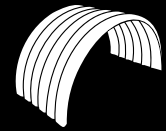
ALUMINIUM

CHASSIS  
POLES

MOUNTING  
BRACKETS

MUDFLAPS

ACCESSORIES



## SMOOTH TRUCK GUARDS

2mm thick aluminium, both edges are pressed to 30mm. They can be fitted to show the smooth finish or painted custom colours. Dispatched with the protective film on.

**Minimum order quantity 10. Guards made to order, lead time approximately 2-3 weeks.**

### SINGLES ALUMINIUM SMOOTH



| PART #   | MEASUREMENT |            |             | TYRE                   |
|----------|-------------|------------|-------------|------------------------|
|          | SPAN (MM)   | WIDTH (MM) | RADIUS (MM) |                        |
| ALS11048 | 1100        | 480        | 550         | Single or Super Single |
| ALS12048 | 1200        | 480        | 600         | Single or Super Single |

### DUALS ALUMINIUM SMOOTH



| PART #   | MEASUREMENT |            |             | TYRE              |
|----------|-------------|------------|-------------|-------------------|
|          | SPAN (MM)   | WIDTH (MM) | RADIUS (MM) |                   |
| ALS10058 | 1000        | 580        | 500         | 19.5" Duals       |
| ALS11063 | 1100        | 630        | 550         | Low Profile Duals |
| ALS12063 | 1200        | 630        | 600         | 11R 22.5" Duals   |

### QUARTER GUARD ALUMINIUM SMOOTH



| PART #   | MEASUREMENT |            |             | TYRE  |
|----------|-------------|------------|-------------|-------|
|          | SPAN (MM)   | WIDTH (MM) | RADIUS (MM) |       |
| ALSQT606 | -           | 630        | 600         | Duals |



## CHASSIS POLE SALT SPRAY TESTING

### The test: Salt Spray Chamber

**TEST:** Chassis poles are placed in a salt spray chamber in an independent laboratory. The chamber simulates a corrosive environment to test a material's resistance to rust and corrosion.

**TEST CONDITIONS:** Both stainless and electroplated poles were placed in the same location in the salt spray machine. To replicate "on the road" real life conditions, we applied small cuts to each chassis pole to simulate wear and tear that may occur from road conditions. The chamber sprays a salt solution onto the chassis poles, with inspections undertaken periodically.

### Hypothesis and Results

**HYPOTHESIS:** We expected stainless steel poles to perform better by rusting less compared to electroplate poles.

**RESULTS:** Unsurprisingly, stainless steel chassis poles performed better than electroplated poles. Stainless poles showed very little signs of rust in comparison to electroplated poles.



*The RHINO salt spray test showing chassis poles – stainless (bottom) vs electroplated (top).*



*RHINO stainless steel chassis poles on concrete truck / agitator truck.*

PLASTIC

STAINLESS

ALUMINIUM

**CHASSIS  
POLES**

MOUNTING  
BRACKETS

MUDFLAPS

ACCESSORIES



## ELECTROPLATED VS STAINLESS

- RHINO Chassis Poles are electroplated in a high quality ultra bright zinc silver. Chassis poles can be installed directly onto chassis or finished further with painting.
- RHINO Stainless poles give a superior protection against corrosion compared to steel.

**RHINO chooses not to manufacturer chrome plated chassis poles that look “shiny” but will rust once scratched / chipped.**

### WHAT IS ELECTROPLATING?

Electroplating is a shiny smooth finish with between 15-25 microns of zinc which helps to protect the poles from rusting. Electroplating a great base for painting or powder coating onto as an extra protection. One of the advantages of electroplating is its ability to enhance a material's resistance to rust and other types of corrosion.

### ELECTROPLATING PROCESS

1. **Degreaser** - which takes off oil.
2. **Sulphuric (sulfuric) acid** - takes off mill scale and gets to bare metal.
3. **Electroplating** - applying zinc by electrical current in zinc, rather than “hot dip”. Passing electricity through the steel binds the zinc to the metal and changes the molecular construction of the steel. Using electrolysis means the zinc will not chip off like paint or chrome plating which are both coated on.
4. **Passivation** - which makes the zinc stick.

### IMAGES OF ELECTRO AND ST POLES



*Electroplated RHINO CPO chassis pole - CPO*



*RHINO stainless Steel chassis pole - STCPOL*



## STEEL

### CHASSIS POLE OFFSET (CPO AND VARIATIONS)

Standard offset with one fitting hole to the chassis. Available in a range of lengths.



Close-up of reverse side



| PART # | NAME                           | LENGTH (MM) | OFFSET (MM) | FINISH      | LUG | BASE HOLES | BASE LENGTH (MM) | WEIGHT (KG) |
|--------|--------------------------------|-------------|-------------|-------------|-----|------------|------------------|-------------|
| CPO625 | Chassis Pole Offset – 625 Long | 625         | 150         | Zinc Silver | No  | 1          | 87               | 3.1         |
| CPO    | Chassis Pole Offset – 750 Long | 750         | 150         | Zinc Silver | No  | 1          | 87               | 3.3         |
| CPO950 | Chassis Pole Offset – 950 Long | 950         | 150         | Zinc Silver | No  | 1          | 87               | 4.0         |

The base pipe has one 17mm hole to fit the pole to the chassis

### CHASSIS POLE OFFSET WITH LUG (CPOL AND VARIATIONS)

The CPOL range is unique with the “Lug” giving the ability to fit two bolts to the chassis for extra strength. Available in a range of lengths.



Close-up of reverse side



| PART #  | NAME                               | LENGTH (MM) | OFFSET (MM) | FINISH      | LUG | BASE HOLES | BASE LENGTH (MM) | WEIGHT (KG) |
|---------|------------------------------------|-------------|-------------|-------------|-----|------------|------------------|-------------|
| CPOL625 | Chassis Pole Offset Lug – 625 Long | 625         | 150         | Zinc Silver | Yes | 2          | 87               | 3.1         |
| CPOL690 | Chassis Pole Offset Lug – 690 Long | 690         | 150         | Zinc Silver | Yes | 2          | 87               | 3.2         |
| CPOL    | Chassis Pole Offset Lug – 750 Long | 750         | 150         | Zinc Silver | Yes | 2          | 87               | 3.3         |
| CPOLL   | Chassis Pole Offset Lug – 850 Long | 850         | 150         | Zinc Silver | Yes | 2          | 87               | 3.7         |

The base pipe has two holes - one 17mm diameter and one 10mm diameter

### CHASSIS POLE OFFSET 850MM LONG (CPOS)

The base is extra long (200 mm) allowing extra clearance from the chassis of 125 mm.



Close-up of reverse side



| PART # | NAME                                   | LENGTH (MM) | OFFSET (MM) | FINISH      | LUG | BASE HOLES | BASE LENGTH (MM) | WEIGHT (KG) |
|--------|--|-------------|-------------|-------------|-----|------------|------------------|-------------|
| CPOS   | Chassis Pole Offset stepout – 870 Long | 870         | 150         | Zinc Silver | No  | 1          | 200              | 3.7         |

The base is extra long and has one 17mm diameter hole to fit the pole to the chassis

### CHASSIS POLE STRAIGHT 750MM LONG (CPS)

Simple and straight.



| PART # | NAME                              | LENGTH (MM) | OFFSET (MM) | FINISH      | LUG | BASE HOLES | BASE LENGTH (MM) | WEIGHT (KG) |
|--------|-----------------------------------|-------------|-------------|-------------|-----|------------|------------------|-------------|
| CPS    | Chassis Poles Straight – 750 Long | 750         | 0           | Zinc Silver | No  | 1          | NA               | 2.8         |

The pipe is straight with one 17mm diameter hole to fit the pole to the chassis



## STAINLESS

### CHASSIS POLE STAINLESS STEEL OFFSET (STCPO AND VARIATIONS)

Stainless pole with one fitting hole to the chassis.  
Available in a range of finishes.



Close-up of reverse side

| PART #     | NAME  | LENGTH (MM) | OFFSET (MM) | FINISH | LUG | BASE HOLES | BASE LENGTH (MM) | WEIGHT (KG) |
|------------|---|-------------|-------------|--------|-----|------------|------------------|-------------|
| STCPO      | Stainless Chassis Pole Offset Polished – 750 Long | 750         | 150         | Polish | No  | 1          | 87               | 3.6         |
| STCPO-MATT | Stainless Chassis Pole Offset Matte – 750 Long    | 750         | 150         | Matte  | No  | 1          | 87               | 3.6         |

The base stainless steel pipe has one 17mm diameter hole to fit the pole to the chassis

### CHASSIS POLE STAINLESS STEEL OFFSET WITH LUG (STCPOL AND VARIATIONS)

Stainless pole with “Lug” giving the ability to fit two bolts to the chassis for extra strength. Available in a range of finishes and lengths.



Close-up of reverse side

| PART #         | NAME  | LENGTH (MM) | OFFSET (MM) | FINISH | LUG | BASE HOLES | BASE LENGTH (MM) | WEIGHT (KG) |
|----------------|---|-------------|-------------|--------|-----|------------|------------------|-------------|
| STCPOL625      | Stainless Chassis Pole Offset Lug Polished – 625 Long | 625         | 150         | Polish | Yes | 2          | 87               | 3.4         |
| STCPOL625-MATT | Stainless Chassis Pole Offset Lug Matte – 625 Long    | 625         | 150         | Matte  | Yes | 2          | 87               | 3.4         |
| STCPOL700      | Stainless Chassis Pole Offset Lug Polished – 700 Long | 700         | 150         | Polish | Yes | 2          | 87               | 3.5         |
| STCPOL700-MATT | Stainless Chassis Pole Offset Lug Matte – 700 Long    | 700         | 150         | Matte  | Yes | 2          | 87               | 3.5         |
| STCPOL         | Stainless Chassis Pole Offset Lug Polished – 750 Long | 750         | 150         | Polish | Yes | 2          | 87               | 3.6         |
| STCPOL-MATT    | Stainless Chassis Pole Offset Lug Matte – 750 Long    | 750         | 150         | Matte  | Yes | 2          | 87               | 3.6         |

The base stainless steel pipe has two holes - one 17mm diameter and one 10mm diameter

### CHASSIS POLE STAINLESS STEEL OFFSET 850MM LONG (STCPOS AND VARIATIONS)

The base is extra long (200mm) allowing extra clearance from the chassis of 125 mm.



Close-up of reverse side

| PART #      | NAME                                | LENGTH (MM) | OFFSET (MM) | FINISH | LUG | BASE HOLES | BASE LENGTH (MM) | WEIGHT (KG) |
|-------------|-------------------------------------|-------------|-------------|--------|-----|------------|------------------|-------------|
| STCPOS      | Stainless Pole Stepout 870 Polished | 870         | 150         | Polish | No  | 1          | 200              | 3.7         |
| STCPOS-MATT | Stainless Pole Stepout 870 Matte    | 870         | 150         | Matte  | No  | 1          | 200              | 3.7         |

The base stainless steel pipe has one 17mm diameter hole to fit the pole to the chassis



## END CAPS

Plastic end caps to fit in the outer and inner end of RHINO chassis poles. Available in a range of colours and stainless steel to suit.

### CAP 40



| PART #      | NAME                                  |
|-------------|---------------------------------------|
| CAP40 BLACK | CAP40 outer end of pole black         |
| CAP40 GREY  | CAP40 outer end of pole grey          |
| CAP40 208   | CAP40 outer end of pole dark green    |
| CAP40 WHITE | CAP40 outer end of pole white         |
| CAP40 325   | CAP40 outer end of light blue         |
| STCAP40     | Stainless steel cap outer end of pole |

### CAP 50



| PART #      | NAME                                  |
|-------------|---------------------------------------|
| CAP50 BLACK | CAP50 inner end of pole black         |
| CAP50 GREY  | CAP50 inner end of pole grey          |
| CAP50 208   | CAP50 inner end of pole dark green    |
| CAP50 WHITE | CAP50 inner end of pole white         |
| CAP50 325   | CAP50 inner end of pole light blue    |
| STCAP50     | Stainless steel cap inner end of pole |

## REFLECTOR POLE CAP OUTER END - R40

Reflective polycarbonate end cap to fit in the outer end of RHINO chassis poles. The caps have a small diameter of 41.8mm and the large diameter is 48mm.

### R40



| PART # | NAME                    |
|--------|-------------------------|
| R40    | Reflector Cap Outer End |

## L.E.D LIGHT POLE END CAP OUTER END - LR40

LED light to fit in the outer end of RHINO chassis poles. Multi voltage 12/24 Volt cable length 1 Meter. Amber Lens, with Amber Leds. The caps have a small diameter of 39.7mm, and the large diameter is 48mm.



| PART # | NAME                           |
|--------|--------------------------------|
| LR40   | LED Light Pole Cap – Outer End |



## SADDLES

RHINO aluminium saddles are the high performance option to fit Chassis Poles. Cast made with options for a standard or polished finish. Supplied with nuts, bolts, washers, rubber isolating pads and backing plates. Outer holes are at 200mm centers.

### ALUMINIUM SADDLES



| PART # | NAME                           | WEIGHT (KG) |
|--------|--------------------------------|-------------|
| ASC    | Aluminium Cast Saddle          | 0.7         |
| ASCP   | Aluminium Cast Saddle Polished | 0.7         |

### PLASTIC SADDLES

High quality RHINO Plastic Saddle to fit Chassis Poles. Made from glass reinforced nylon and available in a range of colours below with more in the pipeline. Supplied with nuts, bolts, washers and centre screw. Outer holes are at 232mm centers. Weight 430gm.



| PART #      | NAME                       |
|-------------|----------------------------|
| PLSAD-BLACK | Plastic Saddle Black       |
| PLSAD-RED   | Plastic Saddle Red         |
| PLSAD-GREY  | Plastic Saddle Grey/Silver |
| PLSAD-WHITE | Plastic Saddle White       |
| PLSAD-208   | Plastic Saddle Dark Green  |
| PLSAD-209   | Plastic Saddle Light Green |
| PLSAD-325   | Plastic Saddle Light Blue  |
| PLSAD-326   | Plastic Saddle Medium Blue |
| PLSAD-369   | Plastic Saddle Dark Blue   |
| PLSAD61     | Plastic Saddle Orange      |

## PLASTIC CLAMPS

High quality RHINO Plastic Clamp to fit Chassis Poles. Made from glass reinforced nylon and available in a range of colours below with more in the pipeline. Supplied with nuts, bolts, washers. 2 x holes are at 78mm centres. Weight 175gm.



| PART #     | NAME                      |
|------------|---------------------------|
| PLCL-117   | Plastic Clamp Yellow      |
| PLCL-208   | Plastic Clamp Dark Green  |
| PLCL-325   | Plastic Clamp Light Blue  |
| PLCL-326   | Plastic Clamp Medium Blue |
| PLCL-370   | Plastic Clamp Dark Blue   |
| PLCL-70    | Plastic Clamp Black       |
| PLCL-816   | Plastic Clamp Grey/Silver |
| PLCL-RED   | Plastic Clamp Red         |
| PLCL-WHITE | Plastic Clamp White       |



## LIGHT BARS

L.E.D rear, stop and turn lights mounted in a stainless steel folder section, bolts to two cast aluminium saddles. Fits onto 40NB chassis poles. Lights are mounted. Photos show with optional chrome bezel.

### 38CM LIGHT BAR



| PART #    | NAME   | WEIGHT |
|-----------|--|--------|
| LB38RE    | L.E.D light bar 38cm rectangular lights, bolts centre 38cm | 3.18   |
| LBARV7013 | Optional chrome bezel                                      |        |

### 49CM LIGHT BAR



| PART #    | NAME   | WEIGHT |
|-----------|--|--------|
| LB49RE    | L.E.D light bar 49cm rectangular lights, bolts centre 49cm | 3.18   |
| LBARV7013 | Optional chrome bezel                                      |        |

PLASTIC

STAINLESS

ALUMINIUM

CHASSIS  
POLES

**MOUNTING  
BRACKETS**

MUDFLAPS

ACCESSORIES

# Mudflap Range

The ultimate on-road presence and performance.

## DISCOVER THE DIFFERENCE



**A range of sizes**



**High performing materials**



**Two material options**



**White or black**



**Branded options**



**NZ made**



**100% Recyclable**

**No minimum quantity order**



PLAIN  
WHITE



PLAIN  
BLACK



CUSTOM  
BRANDED WHITE



CUSTOM  
BRANDED BLACK

Branded Mudflaps  
Your logo here



Slotted holes  
for mounting



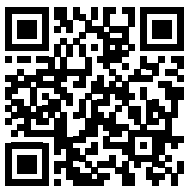
Smooth edges



## CUSTOM BRANDED

All RHINO mudflaps are able to be custom branded with your high quality logo. The print technology we use ensures longevity and achieves excellent detail using multiple colours.

**For a quote on branding your mudflaps, please complete the mudflaps quote form on our website.**



[mudguards.co.nz/  
quote-mudflaps](https://mudguards.co.nz/quote-mudflaps)



PLASTIC

STAINLESS

ALUMINIUM

CHASSIS  
POLES

MOUNTING  
BRACKETS

**MUDFLAPS**

ACCESSORIES

## RHINO MUDFLAPS - CUSTOM SIZE

In addition to the standard sizes we also offer large customers custom mudflaps sizing.

### Benefits:

- Faster installation time and reduced labour
- A uniform look of high quality across all your vehicles
- Customisation for different customers or requirements.

### Options:

- **Materials:** Standard plastic or premium flexible plastic
- **Colours:** White and black
- Minimum order quantities apply
- Angles or holes.



*Example of custom mudflaps with angles*

## MUDFLAP SIZING CHART

RHINO mudflaps are listed in both metric and imperial sizing and matched to RHINO guard sizes. Two material options: Standard plastic and flexible plastic. Colours: white and black No minimum order quantities.

RHINO mudguards wide range covers all sizes for dual and single wheels. Refer to size chart.

### MUDFLAP SIZING CHART

*Metric measurements in mm are used, we round to the nearest inch.*



*\* We offer TPE material for larger mudflaps.*

# MUDFLAPS PART CODES



| GUARDS     | WIDTH (MM) | HEIGHT (MM)  | STANDARD     |                | FLEXIBLE       |                |
|------------|------------|--------------|--------------|----------------|----------------|----------------|
|            |            |              | WHITE        | BLACK          | WHITE          | BLACK          |
| DUALS      | 600mm/24"  | 900mm/36"    | MFPL6090WHI  | MFPL6090BLK    | MFFLEX6090WHI  | MFFLEX6090BLK  |
|            | 600mm/24"  | 750mm/30"    | MFPL6075WHI  | MFPL6075BLK    | MFFLEX6075WHI  | MFFLEX6075BLK  |
|            | 600mm/24"  | 600mm/24"    | MFPL6060WHI  | MFPL6060BLK    | MFFLEX6060WHI  | MFFLEX6060BLK  |
|            | 600mm/24"  | 550mm/22"    | MFPL6055WHI  | MFPL6055BLK    | MFFLEX6055WHI  | MFFLEX6055BLK  |
|            | 600mm/24"  | 500mm/20"    | MFPL6050WHI  | MFPL6050BLK    | MFFLEX6050WHI  | MFFLEX6050BLK  |
|            | 600mm/24"  | 450mm/18"    | MFPL6045WHI  | MFPL6045BLK    | MFFLEX6045WHI  | MFFLEX6045BLK  |
|            | 600mm/24"  | 400mm/16"    | MFPL6040WHI  | MFPL6040BLK    | MFFLEX6040WHI  | MFFLEX6040BLK  |
|            | 600mm/24"  | 350mm/14"    | MFPL6035WHI  | MFPL6035BLK    | MFFLEX6035WHI  | MFFLEX6035BLK  |
|            | 600mm/24"  | 300mm/12"    | MFPL6030WHI  | MFPL6030BLK    | MFFLEX6030WHI  | MFFLEX6030BLK  |
|            | 600mm/24"  | 250mm/10"    | MFPL6025WHI  | MFPL6025BLK    | MFFLEX6025WHI  | MFFLEX6025BLK  |
|            | 600mm/24"  | 200mm/8"     | MFPL6020WHI  | MFPL6020BLK    | MFFLEX6020WHI  | MFFLEX6020BLK  |
| SINGLES    | 480mm/19"  | 600mm/24"    | MFPL4860WHI  | MFPL4860BLK    | MFFLEX4860WHI  | MFFLEX4860BLK  |
|            | 480mm/19"  | 550mm/22"    | MFPL4855WHI  | MFPL4855BLK    | MFFLEX4855WHI  | MFFLEX4855BLK  |
|            | 480mm/19"  | 500mm/20"    | MFPL4850WHI  | MFPL4850BLK    | MFFLEX4850WHI  | MFFLEX4850BLK  |
|            | 480mm/19"  | 450mm/18"    | MFPL4845WHI  | MFPL4845BLK    | MFFLEX4845WHI  | MFFLEX4845BLK  |
|            | 480mm/19"  | 400mm/16"    | MFPL4840WHI  | MFPL4840BLK    | MFFLEX4840WHI  | MFFLEX4840BLK  |
|            | 480mm/19"  | 350mm/14"    | MFPL4835WHI  | MFPL4835BLK    | MFFLEX4835WHI  | MFFLEX4835BLK  |
|            | 480mm/19"  | 300mm/12"    | MFPL4830WHI  | MFPL4830BLK    | MFFLEX4830WHI  | MFFLEX4830BLK  |
|            | 480mm/19"  | 250mm/10"    | MFPL4825WHI  | MFPL4825BLK    | MFFLEX4825WHI  | MFFLEX4825BLK  |
|            | 480mm/19"  | 200mm/8"     | MFPL4820WHI  | MFPL4820BLK    | MFFLEX4820WHI  | MFFLEX4820BLK  |
| SINGLES    | 430mm/17"  | 600mm/24"    | MFPL4360WHI  | MFPL4360BLK    | MFFLEX4360WHI  | MFFLEX4360BLK  |
|            | 430mm/17"  | 550mm/22"    | MFPL4355WHI  | MFPL4355BLK    | MFFLEX4355WHI  | MFFLEX4355BLK  |
|            | 430mm/17"  | 500mm/20"    | MFPL4350WHI  | MFPL4350BLK    | MFFLEX4350WHI  | MFFLEX4350BLK  |
|            | 430mm/17"  | 450mm/18"    | MFPL4345WHI  | MFPL4345BLK    | MFFLEX4345WHI  | MFFLEX4345BLK  |
|            | 430mm/17"  | 400mm/16"    | MFPL4340WHI  | MFPL4340BLK    | MFFLEX4340WHI  | MFFLEX4340BLK  |
|            | 430mm/17"  | 350mm/14"    | MFPL4335WHI  | MFPL4335BLK    | MFFLEX4335WHI  | MFFLEX4335BLK  |
|            | 430mm/17"  | 300mm/12"    | MFPL4330WHI  | MFPL4330BLK    | MFFLEX4330WHI  | MFFLEX4330BLK  |
|            | 430mm/17"  | 250mm/10"    | MFPL4325WHI  | MFPL4325BLK    | MFFLEX4325WHI  | MFFLEX4325BLK  |
|            | 430mm/17"  | 200mm/8"     | MFPL4320WHI  | MFPL4320BLK    | MFFLEX4320WHI  | MFFLEX4320BLK  |
|            | 1200mm/48" | 600mm/24"    | MFPL12060WHI | MFPL12060BLK   | MFFLEX12060WHI | MFFLEX12060BLK |
| 1200mm/48" | 450mm/18"  | MFPL12045WHI | MFPL12045BLK | MFFLEX12045WHI | MFFLEX12045BLK |                |
| 1200mm/48" | 300mm/12"  | MFPL12030WHI | MFPL12030BLK | MFFLEX12030WHI | MFFLEX12030BLK |                |

PLASTIC

STAINLESS

ALUMINIUM

CHASSIS  
POLES

MOUNTING  
BRACKETS

**MUDFLAPS**

ACCESSORIES

| TPE PLASTIC |             |                  |
|-------------|-------------|------------------|
| WIDTH (MM)  | HEIGHT (MM) | WHITE / BLACK    |
| 2500        | 600         | MFTPE25060BLKWHI |
| 2450        | 600         | MFTPE24560BLKWHI |
| 2400        | 600         | MFTPE24060BLKWHI |



## MUDFLAP BARS

RHINO alloy mudflap bars are made from high-quality 4.5mm aluminium or 1.2mm stainless steel. These are highly cost effective and save you the time of cutting and punching alloy flat bar. Products are dispatched with the protective film over the aluminium and holes punched. Use the 'WK' (With Kit) code on the end when ordering to include bolt/nut/washer kits to fit.

Mudflap bars provide a means to fit mudflaps to mudguards. Cut to length with holes these make installation a breeze and more cost effective than doing it yourself. Also comes with the option of supplied with nuts, bolts and washers. Designed to fit the width of RHINO guards with pre-punched holes to fit mudflaps. The width is the width of the mudflap bar and closely matches the width of the guards. All measurements are in millimetres (mm).

### MUDFLAP BAR - ALUMINIUM



*\*Dual mudflap bar shown*

| PART #     | LENGTH (MM) | HEIGHT (MM) | MATERIAL    | GUARDS | HOLES                              |
|------------|-------------|-------------|-------------|--------|------------------------------------|
| MFBAL422   | 420         | 25          | 4.5mm alloy | Single | 3 Holes                            |
| MFBAL422WK | 420         | 25          | 4.5mm alloy | Single | 3 holes with bolts, nuts & washers |
| MFBAL602   | 600         | 25          | 4.5mm alloy | Dual   | 4 holes                            |
| MFBAL602WK | 600         | 25          | 4.5mm alloy | Dual   | 4 holes with bolts, nuts & washers |

### MUDFLAP BAR - STAINLESS



*\*Single mudflap bar shown*

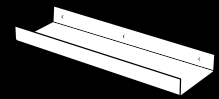
| PART #     | LENGTH (MM) | HEIGHT (MM) | MATERIAL        | GUARDS | HOLES                              |
|------------|-------------|-------------|-----------------|--------|------------------------------------|
| MFBST424   | 420         | 40          | 1.2mm Stainless | Single | 3 holes                            |
| MFBST424WK | 420         | 40          | 1.2mm Stainless | Single | 3 holes with bolts, nuts & washers |
| MFBST604   | 600         | 40          | 1.2mm Stainless | Duals  | 4 holes                            |
| MFBST604WK | 600         | 40          | 1.2mm Stainless | Duals  | 4 holes with bolts, nuts & washers |

### LOOPKIT 600MM x 300MM NEOPRENE

3mm Neoprene rubber sheet, connects two mudguards end to end to decrease spray between tyres.



| PART #             | LENGTH (MM) | WIDTH (MM) | MATERIAL                          | GUARDS | HOLES                              |
|--------------------|-------------|------------|-----------------------------------|--------|------------------------------------|
| LK3060 (flap only) | 600         | 300        | Neoprene rubber                   | Duals  | N/A                                |
| LK3060-MFBST604WK  | 600         | 40         | Neoprene rubber + 1.2mm stainless | Duals  | 4 holes with bolts, nuts & washers |



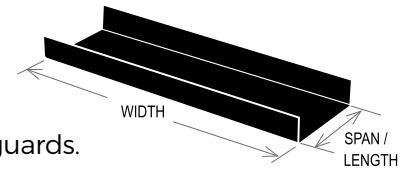
## INFILL SPACERS

Infill spacers fit between the guards and add stability to guard fittings, reduce spray and make for a classy finish. There are two options - the box or U shape and are manufactured ready for installation. Infill spacers are available in either aluminium or stainless and come in a range of spans and widths to suit your requirements.

### Measuring guide:

**SPAN** - Distance on the top of the infill spacer between the guards.

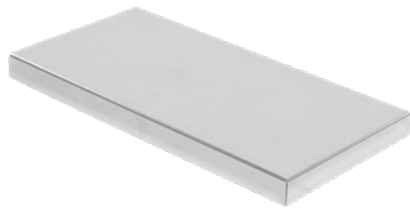
**WIDTH** - Width of the spacer and closely matches the width of the guards.



### ALUMINIUM BOX WELD

These top of the range spacers are expertly welded to give the best finish. Boxed spacers are flat on top with folds on three sides with the inside edge facing the chassis left open. The folds on the widths are at 90 degrees to fit the bottom of the guard.

Made to fit most guards in the RHINO range the standard width is 600mm and standard height is 40mm. Standard material is 3mm.



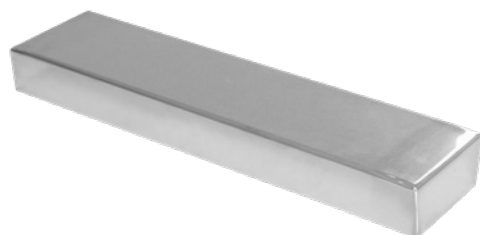
| ALLOY PART WELD # | SPAN (MM) | WIDTH (MM) | HEIGHT (MM) |
|-------------------|-----------|------------|-------------|
| IFBALW1060        | 100       | 600        | 40          |
| IFBALW1260        | 125       | 600        | 40          |
| IFBALW1560        | 150       | 600        | 40          |
| IFBALW1760        | 175       | 600        | 40          |
| IFBALW2060        | 200       | 600        | 40          |
| IFBALW2260        | 225       | 600        | 40          |
| IFBALW2560        | 250       | 600        | 40          |
| IFBALW2760        | 275       | 600        | 40          |
| IFBALW3060        | 300       | 600        | 40          |
| IFBALW3260        | 325       | 600        | 40          |
| IFBALW3560        | 350       | 600        | 40          |

*Minimum quantities apply*

### STAINLESS BOX WELD

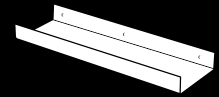
These top of the range spacers are expertly welded, buffed and polished to give the best finish. Boxed spacers are flat on top with folds on three sides with the inside edge facing the chassis left open. The folds on the widths are at 90 degrees to fit the bottom of the guard.

Made to fit most guards in the RHINO range the standard width is 600mm and standard height is 40mm. Standard material is 1.2mm Stainless steel 304 Bright Annealed.



| STAINLESS PART WELD # | SPAN (MM) | WIDTH (MM) | HEIGHT (MM) |
|-----------------------|-----------|------------|-------------|
| IFBSTW1060            | 100       | 600        | 40          |
| IFBSTW1260            | 125       | 600        | 40          |
| IFBSTW1560            | 150       | 600        | 40          |
| IFBSTW1760            | 175       | 600        | 40          |
| IFBSTW2060            | 200       | 600        | 40          |
| IFBSTW2260            | 225       | 600        | 40          |
| IFBSTW2560            | 250       | 600        | 40          |
| IFBSTW2760            | 275       | 600        | 40          |
| IFBSTW3060            | 300       | 600        | 40          |
| IFBSTW3260            | 325       | 600        | 40          |
| IFBSTW3560            | 350       | 600        | 40          |

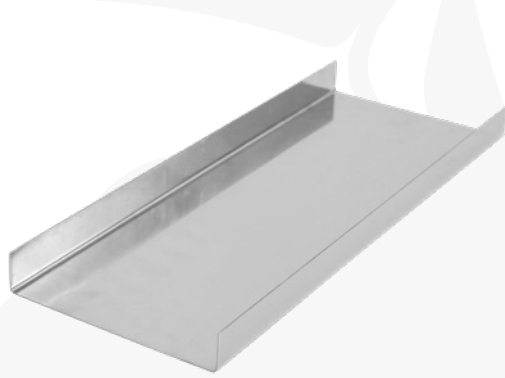
*Minimum quantities apply*



## INFILL SPACERS - ALUMINIUM BOX U SHAPE

U-shaped infill spacers are flat with a fold at each end to connect to the guards. The folds on the widths are at 90 degrees to fit the bottom of the guard.

Made to fit most guards in the RHINO range the standard width is 600mm and standard height is 40mm. Standard material is 3mm.



| ALLOY PART WELD # | SPAN (MM) | WIDTH (MM) | HEIGHT (MM) |
|-------------------|-----------|------------|-------------|
| IFUAL1060         | 100       | 600        | 40          |
| IFUAL1260         | 125       | 600        | 40          |
| IFUAL1560         | 150       | 600        | 40          |
| IFUAL1760         | 175       | 600        | 40          |
| IFUAL2060         | 200       | 600        | 40          |
| IFUAL2260         | 225       | 600        | 40          |
| IFUAL2560         | 250       | 600        | 40          |
| IFUAL2760         | 275       | 600        | 40          |
| IFUAL3060         | 300       | 600        | 40          |
| IFUAL3260         | 325       | 600        | 40          |
| IFUAL3560         | 350       | 600        | 40          |

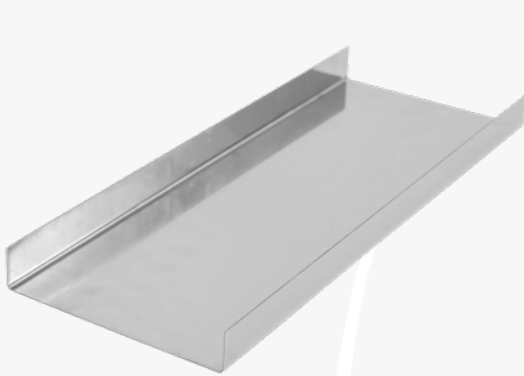
*Minimum quantities apply*

## INFILL SPACERS - STAINLESS BOX U SHAPE

U-shaped infill spacers are flat with a fold at each end to connect to the guards. The folds on the widths are at 90 degrees to fit the bottom of the guard.

Made to fit most guards in the RHINO range the standard width is 600mm and standard height is 40mm.

Standard material is 1.2mm Stainless steel 304 Bright Annealed.



| STAINLESS PART WELD # | SPAN (MM) | WIDTH (MM) | HEIGHT (MM) |
|-----------------------|-----------|------------|-------------|
| IFUST1060             | 100       | 600        | 40          |
| IFUST1260             | 125       | 600        | 40          |
| IFUST1560             | 150       | 600        | 40          |
| IFUST1760             | 175       | 600        | 40          |
| IFUST2060             | 200       | 600        | 40          |
| IFUST2260             | 225       | 600        | 40          |
| IFUST2560             | 250       | 600        | 40          |
| IFUST2760             | 275       | 600        | 40          |
| IFUST3060             | 300       | 600        | 40          |
| IFUST3260             | 325       | 600        | 40          |
| IFUST3560             | 350       | 600        | 40          |

*Minimum quantities apply*



**Designed and built for the toughest trucking conditions.**



**Toughly beautiful.**



**We have the right guard for every wheel.**

**TRUCK AND TRAILER  
PRODUCT CATALOGUE**

VERSION 2

**Nothing's built  
like a RHINO**

NZ: [sales@mudguards.co.nz](mailto:sales@mudguards.co.nz)

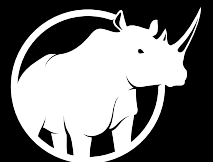
[rhinoguards.co.nz](http://rhinoguards.co.nz)

+64 7 347 9363

AU: [sales@rhinoguards.com.au](mailto:sales@rhinoguards.com.au)

[rhinoguards.com.au](http://rhinoguards.com.au)

+61 2 7908 7961



**RHINO**