

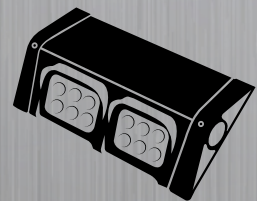
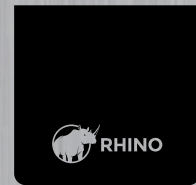
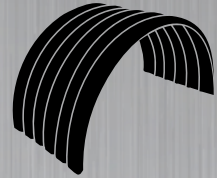


# RHINO

## Truck and Trailer Product Catalogue

---

[rhinogroup.co.nz](http://rhinogroup.co.nz)  
[rhinoguards.com.au](http://rhinoguards.com.au)



# Quick Sizing Guide

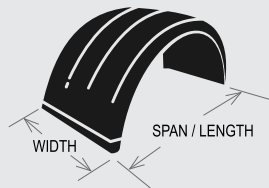
With decades of industry experience we have learned a lot about the sizing of tyres, wheels, mudguards, mudflaps and lots more. The industry is always changing so for the most up to date sizing information please go to our website or refer to the [RHINO™ TYRE SIZE GUIDE](#) online.

## To ensure the best fit:

We recommend the following for each product. Be sure to add the desired amount of clearance between the wheel, chassis or ground.

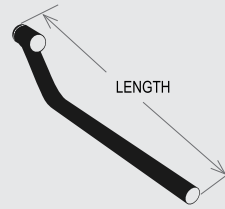
Less if you want a close fit, more if you require more space.

You can use this to select the preferred RHINO™ product.



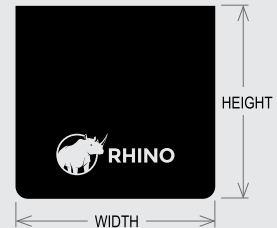
### GUARDS

Measure the span and width of the wheels to give you the span and width of the mudguard



### CHASSIS POLES

Measure the distance from the chassis to the outside of the guards to give you the length of the chassis pole



### MUDFLAPS

Measure the width of guards and height / depth to the ground to give the width and height of the mudflap

## Freight

RHINO™ works with our trusted freight companies to ensure our products get to you in the most timely and cost-effective manner, wherever you are in NZ, Australia or around the world. All deliveries have digital track and trace abilities.

Orders are packed to ensure products are protected/stable during transit and freight costs are minimised. Export pallets are used for international orders.

### SMALL ORDERS

Small orders are packed with robust packaging that is durable and recyclable. Packaging is either plastic (stream 4 recycling) or cardboard.

Pack sizes meet weight limits set from freight companies and our maximum internal weight limit of 20kg per pack.



### LARGE ORDERS

Large orders are packed on a pallet to maximise freight efficiencies.

Depending on the size of the order, the type of guards and the freight destination, strapping may be applied.



# Our Purpose

## To maximise transport performance

Our extensive range of high performing products maximise your productivity and make your truck and trailer look distinctive. We provide you with great service and are continuously improving.

Our manufacturing operation in Rotorua, New Zealand has been trusted by truck and trailer manufacturers in New Zealand and internationally for over 30 years. We are centrally located in the North Island. For exports we are in close proximity to the Port of Tauranga and the Ports of Auckland for sea freight and Auckland International Airport for airfreight.

Our highly-skilled and knowledgeable New Zealand-based team manufactures mudguards that are safe and high-performing. RHINO™ uses cutting-edge digital systems and holds considerable stock levels to enable fast dispatch. We offer a full range of material, design, sizing and colour options to suit your requirements. RHINO™ products have a number of performance benefits including customisation, faster installation, strength or aerodynamics. This can lower the total cost of ownership and increase the replacement lifecycle allowing you to stay on the road for longer. Our continued investment allows us to develop new products to meet your needs with our strong sustainability focus demonstrated by the fact that nearly all our products are recyclable.



# RHINO

CONTACT US

NZ +64 7 347 9363 | AU +61 2 7908 7961

[sales@mudguards.co.nz](mailto:sales@mudguards.co.nz)



[rhinogroup.co.nz](http://rhinogroup.co.nz)  
[rhinoguards.com.au](http://rhinoguards.com.au)



# RHINO

## Mudguard Range

**RHINO™ Mudguards are available in  
three material types with a range of designs**

Ribbed

Smooth

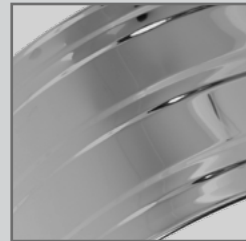
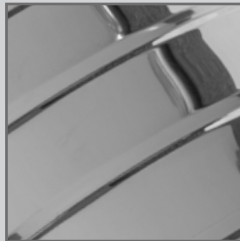
Rod Edge

**PLASTIC**

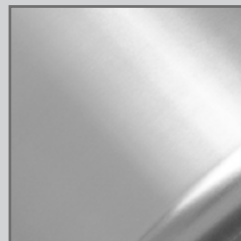


\*Please see our separate  
**RHINO™ COLOUR GUIDE**

**STAINLESS  
STEEL**



**ALUMINIUM**





The full range of RHINO™ plastic mudguards which are known for high performance and safety. Mudguards are rotationally moulded from virgin high grade polyethylene or recycled mudguard plastic. The range covers standard duals, singles, tandems, self steer, front steer and quarter guards. Available in a range of sizes and in 18 colours to suit for fleet colours. These are tough mudguards, designed for extreme UV and weather conditions.

## SINGLE / SUPER SINGLE



## MEGA SINGLE



## QUARTER



## LIGHT TRUCK



\*Please see our separate **RHINO™ COLOUR GUIDE**

PART #	MEASUREMENT				TYRE
	SPAN (MM)	WIDTH (MM)	RADIUS (MM)	WEIGHT (KG)	
PL1204	1200	430	600	5	Single or super single

PART #	MEASUREMENT				TYRE
	SPAN (MM)	WIDTH (MM)	RADIUS (MM)	WEIGHT (KG)	
PL10548	1050	480	525	4.3	Suit Mega Single

PART #	MEASUREMENT				TYRE
	SPAN (MM)	WIDTH (MM)	RADIUS (MM)	WEIGHT (KG)	
PL12063/3		630	600	2	Duals

PART #	MEASUREMENT				TYRE
	SPAN (MM)	WIDTH (MM)	RADIUS (MM)	WEIGHT (KG)	
PL0905	900	520	450	4	15", 16"
RV9025	900	250	450	2.5	16"



## DUALS

\*Please see our separate **RHINO™ COLOUR GUIDE**



PART #	MEASUREMENT				TYRE
	SPAN (MM)	WIDTH (MM)	RADIUS (MM)	WEIGHT (KG)	
PL0925	950	540	475	4	15", 16", 17" duals
PL10058	1000	580	500	4.3	19.5" duals
PL1056	1050	630	525	5.3	Low Profile
PL12063	1200	630	600	6	11R 22.5" Duals
PL12067	1200	670	600	7.3	Duals



## SELF STEER



\*Please see our separate **RHINO™ COLOUR GUIDE**

PART #	MEASUREMENT				TYRE
	SPAN (MM)	WIDTH (MM)	RADIUS (MM)	WEIGHT (KG)	
PL19.5 CESKI	1250	580	500	5.7	Self Steer 19.5"
PLLPCESKI	1280	630	525	6.5	Self Steer Low Profile
PLMEGCES	1250	480	525	4.5	Self-Steer Single or Super Single
PLSTDCESKI	1450	630	600	6.5	Self Steer 11R 22.5"

PLASTIC

STAINLESS

ALUMINIUM

CHASSIS  
POLES

MUDFLAPS

MOUNTING  
BRACKETS

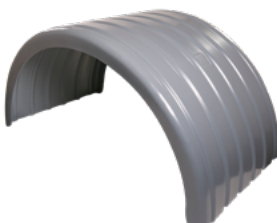
ACCESSORIES

## TANDEM



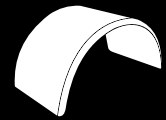
PART #	MEASUREMENT				TYRE
	SPAN (MM)	WIDTH (MM)	RADIUS (MM)	WEIGHT (KG)	
PL2506	2500	630	600	12.5	11R 22.5"
PL2606	2600	630	600	12.5	11R 22.5"

## SPREADER



PART #	MEASUREMENT				TYRE
	SPAN (MM)	WIDTH (MM)	RADIUS (MM)	WEIGHT (KG)	
PLL1408	1400	770	700	14	Spreader

Minimum quantities apply



## RIBBED STAINLESS

Ribs for extra strength and style.

### SINGLE RIBBED STAINLESS



PART #	MEASUREMENT				TYRE
	SPAN (MM)	WIDTH (MM)	RADIUS (MM)	WEIGHT (KG)	
STR11048	1100	480	550	8.8	Low Profile
STR12048	1200	480	600	9.0	Single or Super Single

### DUAL RIBBED STAINLESS



PART #	MEASUREMENT				TYRE
	SPAN (MM)	WIDTH (MM)	RADIUS (MM)	WEIGHT (KG)	
STR10058	1000	580	500	9.4	19.5" Duals
STR10563	1050	630	525	9.6	Low Profile Duals
STR11063	1100	630	550	9.6	Low Profile Duals
STR12063	1200	630	600	10.2	11R 22.5"

### SELF STEER RIBBED STAINLESS



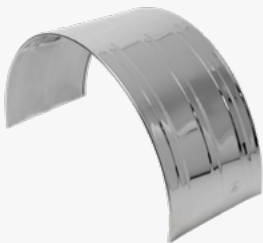
\*Single Self Steer shown

PART #	MEASUREMENT				TYRE
	SPAN (MM)	WIDTH (MM)	RADIUS (MM)	WEIGHT (KG)	
STR11048-200F	1300	480	550	9.2	Self Steer Low Profile Single
STR12048-200F	1400	480	600	9.5	Self Steer Single or Super Single
STR10058-200F	1200	580	500	9.2	Self Steer 19.5" Duals
STR11063-200F	1300	630	550	10.6	Self Steer Low Profile Duals
STR12063-200F	1400	630	600	11.3	Self Steer 11R 22.5"

## ROD EDGED STAINLESS

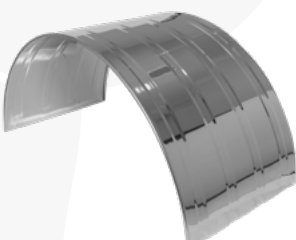
Lightly pressed ribs with a 10mm alloy rod rolled into the edges for extra strength.

### SINGLE ROD-EDGED STAINLESS



PART #	MEASUREMENT				TYRE
	SPAN (MM)	WIDTH (MM)	RADIUS (MM)	WEIGHT (KG)	
STST1104	1100	475	550	7.2	Low Profile Single
STST1204	1200	475	600	7.2	Single or Super Single

### DUALS ROD-EDGED STAINLESS



PART #	MEASUREMENT				TYRE
	SPAN (MM)	WIDTH (MM)	RADIUS (MM)	WEIGHT (KG)	
STST1006	1000	625	500	8.6	19.5" Duals
STST1056	1050	625	525	8.6	Low Profile Duals
STST1106	1100	625	550	9.6	Low Profile Duals
STST1206	1200	625	600	9.6	Duals





## SMOOTH STAINLESS

Smooth stainless finish.

### SINGLE SMOOTH STAINLESS



PART #	MEASUREMENT				TYRE
	SPAN (MM)	WIDTH (MM)	RADIUS (MM)	WEIGHT (KG)	
STS11048	1100	480	550	8.8	Low Profile Single
STS12048	1200	480	600	9.0	Single or Super Single

### DUAL SMOOTH STAINLESS



PART #	MEASUREMENT				TYRE
	SPAN (MM)	WIDTH (MM)	RADIUS (MM)	WEIGHT (KG)	
STS10058	1000	580	500	9.4	19.5" Duals
STS10563	1050	630	525	9.6	Low Profile Duals
STS11063	1100	630	550	9.6	Low Profile Duals
STS12063	1200	630	600	10.2	11R 22.5" Duals

### SELF STEER SMOOTH STAINLESS



\*Dual Self Steer shown

PART #	MEASUREMENT				TYRE
	SPAN (MM)	WIDTH (MM)	RADIUS (MM)	WEIGHT (KG)	
STS11048-200F	1300	480	550	9.2	Self Steer Low Profile Single
STS12048-200F	1400	480	600	9.5	Self Steer Single or Super Single
STS10058-200F	1200	580	500	9.2	Self Steer 19.5" Duals
STS11063-200F	1300	630	550	10.6	Self Steer Low Profile Duals
STS12063-200F	1400	630	600	11.3	Self Steer 11R 22.5" Duals

### HALF TANDEM SMOOTH STAINLESS



PART #	MEASUREMENT				TYRE
	SPAN (MM)	WIDTH (MM)	RADIUS (MM)	WEIGHT (KG)	
STSHT606	1500	630		10.2	Duals

Half tandems can be overlapped and bolted together to form tandem

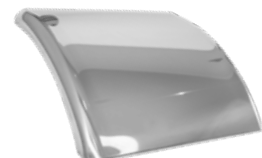
### TANDEM SMOOTH STAINLESS



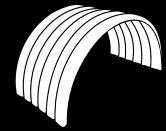
PART #	MEASUREMENT				TYRE
	SPAN (MM)	WIDTH (MM)	RADIUS (MM)	WEIGHT (KG)	
STSTND2606	2600	630	600	20.4	Duals

Modular tandem made up of two half tandems. Requires drilling and assembly

### QUARTER SMOOTH STAINLESS



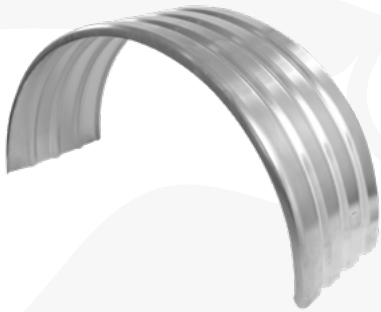
PART #	MEASUREMENT				TYRE
	SPAN (MM)	WIDTH (MM)	RADIUS (MM)	WEIGHT (KG)	
STSQT606	600	630		3.6	Duals



## RIBBED TRUCK GUARDS

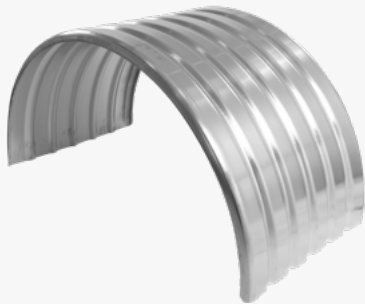
2mm thick aluminium, both edges are rolled over to 30mm and then doubled over for extra strength and safety.

### SINGLE RIBBED ALUMINIUM



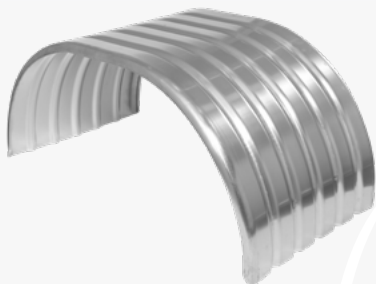
PART #	MEASUREMENT				TYRE
	SPAN (MM)	WIDTH (MM)	RADIUS (MM)	WEIGHT (KG)	
AL1204	1200	400	600	4.8	Single or Super Single
AL1205	1200	500	600	6.1	Single or Super Single

### DUAL RIBBED ALUMINIUM



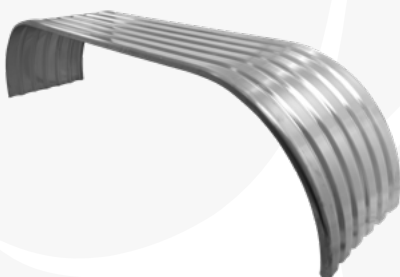
PART #	MEASUREMENT				TYRE
	SPAN (MM)	WIDTH (MM)	RADIUS (MM)	WEIGHT (KG)	
AL0906	900	610	450	5.5	16" Duals
AL0956	950	610	475	5.7	17" Duals
AL1006	1000	610	500	6.0	19.5" Duals
AL1056	1050	610	525	6.2	Low Profile Duals
AL1106	1100	610	550	6.8	Low Profile Duals
AL1206	1200	610	600	7.1	11R 22.5" Duals

### SELF STEER RIBBED ALUMINIUM

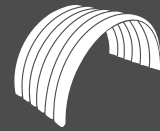


PART #	MEASUREMENT				TYRE
	SPAN (MM)	WIDTH (MM)	RADIUS (MM)	WEIGHT (KG)	
AL 1000-200F	1200	610	500	7.0	Self Steer 19.5" Duals
AL 1100-200F	1300	610	550	7.9	Self Steer Low Profile Duals
AL 1200-200F	1400	610	600	8.0	Self Steer 11R 22.5" Duals

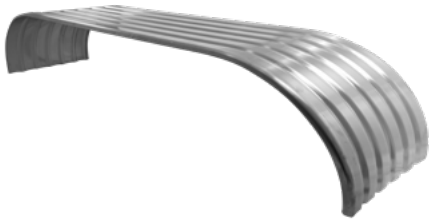
### TANDEM RIBBED ALUMINIUM



PART #	MEASUREMENT			TYRE
	SPAN (MM)	WIDTH (MM)	RADIUS (MM)	
AL2306	2300	610	600	Tandem 1100 centres
AL2406	2400	610	600	Tandem 1200 centres
AL2466	2460	610	600	Tandem 1260 centres
AL2505	2500	510	600	Tandem 1300 centres
AL2506	2500	610	600	Tandem 1300 centres
AL2566	2560	610	600	Tandem 1360 centres
AL2606	2600	610	600	Tandem 1400 centres
AL2706	2700	610	600	Tandem 1500 centres
AL2806	2800	610	600	Tandem 1600 centres



## TRIAxLE RIBBED ALUMINIUM



PART #	MEASUREMENT				TYRE
	SPAN (MM)	WIDTH (MM)	RADIUS (MM)	WEIGHT (KG)	
AL3506	3500	610	600		Triaxle 2300 centres
AL3606	3600	500	600		Triaxle 2400 centres
AL3706	3700	610	600		Triaxle 2500 centres
AL3806	3800	610	600		Triaxle 2600 centres

Minimum order quantities apply

PLASTIC

STAINLESS

ALUMINIUM

CHASSIS POLES

MUDFLAPS

MOUNTING BRACKETS

ACCESSORIES

## SMOOTH TRUCK GUARDS

2mm thick aluminium, both edges are pressed to 30mm. They can be fitted to show the smooth finish or painted custom colours. These are dispatched with the protective film on.

### SINGLES ALUMINIUM SMOOTH



PART #	MEASUREMENT				TYRE
	SPAN (MM)	WIDTH (MM)	RADIUS (MM)	WEIGHT (KG)	
ALS11048	1100	480	550		Single or Super Single
ALS12048	1200	480	600		Single or Super Single

### DUALS ALUMINIUM SMOOTH



PART #	MEASUREMENT				TYRE
	SPAN (MM)	WIDTH (MM)	RADIUS (MM)	WEIGHT (KG)	
ALS10058	1000	580	500		19.5" Duals
ALS10563	1050	630	525		Low Profile Duals
ALS11063	1100	630	550		Low Profile Duals
ALS12063	1200	630	600		11R 22.5" Duals

### QUARTER GUARD ALUMINIUM SMOOTH



PART #	MEASUREMENT				TYRE
	SPAN (MM)	WIDTH (MM)	RADIUS (MM)	WEIGHT (KG)	
ALSQT606	600	630	600		Duals



RHINO™ has the most comprehensive range of Chassis Poles on the market. We have a range of lengths, fitting options and offsets to make your life easier fitting poles, saddles and mudguards. RHINO™ Chassis Poles are electroplated in a high quality ultra bright zinc silver and can be installed directly onto chassis or finished further with painting.

The base pipe is 60 OD (Outside Diameter) and 51.3 ID (Inside Diameter). The offset / bent pipe is 150mm centre to centre and made from 40NB (nominal bore) steel with a 48.4 OD and 42.2 ID. All pipe is produced to AS1074 Standard. Please note that the pipe diameters can change +/- 10% and still be compliant with AS1074 Standard.

\*Please see our separate **END CAPS SECTION**

## STEEL

### CHASSIS POLE OFFSET (CPO AND VARIATIONS)

Standard offset with one fitting hole to the chassis. Available in a range of lengths.



PART #	NAME	LENGTH (MM)	OFFSET (MM)	FINISH	LUG	BASE HOLES	BASE LENGTH (MM)	WEIGHT (KG)
CPO625	Chassis Pole Offset – 625 Long	625	150	Zinc Silver	No	1	87	3.1
CPO	Chassis Pole Offset – 750 Long	750	150	Zinc Silver	No	1	87	3.3
CPO950	Chassis Pole Offset – 950 Long	950	150	Zinc Silver	No	1	87	4.0

The base pipe has one 17mm hole to fit the pole to the chassis

### CHASSIS POLE OFFSET WITH LUG (CPOL AND VARIATIONS)

The CPOL range is unique with the “Lug” giving the ability to fit two bolts to the chassis for extra strength. Available in a range of lengths.



PART #	NAME	LENGTH (MM)	OFFSET (MM)	FINISH	LUG	BASE HOLES	BASE LENGTH (MM)	WEIGHT (KG)
CPOL625	Chassis Pole Offset Lug – 625 Long	625	150	Zinc Silver	Yes	2	87	3.1
CPOL690	Chassis Pole Offset Lug – 690 Long	690	150	Zinc Silver	Yes	2	87	3.2
CPOL	Chassis Pole Offset Lug – 750 Long	750	150	Zinc Silver	Yes	2	87	3.3
CPOLL	Chassis Pole Offset Lug – 850 Long	850	150	Zinc Silver	Yes	2	87	3.7

The base pipe has two holes - one 17mm diameter and one 10mm diameter

### CHASSIS POLE OFFSET 850MM LONG (CPOS)

The base is extra long (200 mm) allowing extra clearance from the chassis of 125 mm.



PART #	NAME	LENGTH (MM)	OFFSET (MM)	FINISH	LUG	BASE HOLES	BASE LENGTH (MM)	WEIGHT (KG)
CPOS	Chassis Pole Offset stepout 870 Long	870	150	Zinc Silver	No	1	200	3.7

The base is extra long and has one 17mm diameter hole to fit the pole to the chassis.



## CHASSIS POLE STRAIGHT 750MM LONG (CPS)

Simple and straight.



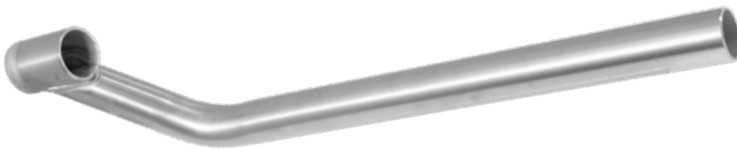
PART #	NAME	LENGTH (MM)	OFFSET (MM)	FINISH	LUG	BASE HOLES	BASE LENGTH (MM)	WEIGHT (KG)
CPS	Chassis Poles Straight-750 Long	750	0	Zinc Silver	No	1	NA	2.8

The pipe is straight with one 17mm diameter hole to fit the pole to the chassis.

## STAINLESS

### CHASSIS POLE STAINLESS STEEL OFFSET (STCPO AND VARIATIONS)

Stainless pole with one fitting hole to the chassis. Available in a range of finishes.



PART #	NAME	LENGTH (MM)	OFFSET (MM)	FINISH	LUG	BASE HOLES	BASE LENGTH (MM)	WEIGHT (KG)
STCPO	Stainless Chassis Pole Offset Polished – 750 Long	750	150	Polish	No	1	87	3.6
STCPO-MATT	Stainless Chassis Pole Offset Matt Finish – 750 Long	750	150	Matt / Satin	No	1	87	3.6

The base stainless steel pipe has one 17mm diameter hole to fit the pole to the chassis.

### CHASSIS POLE STAINLESS STEEL OFFSET WITH LUG (STCPOL AND VARIATIONS)

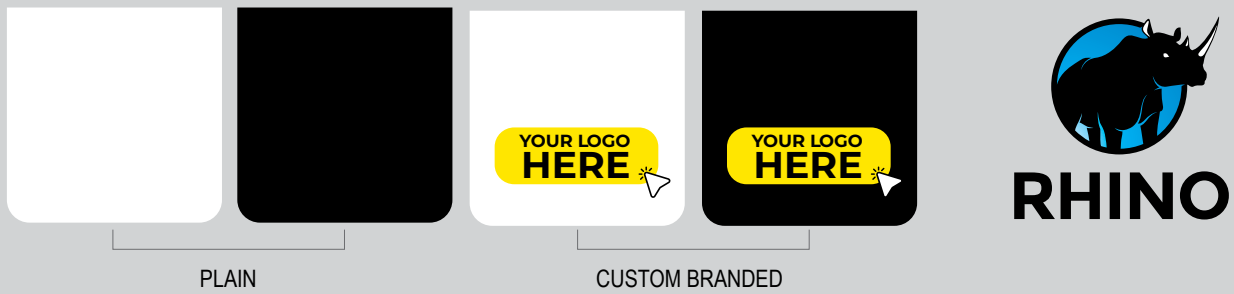
Stainless pole with “Lug” giving the ability to fit two bolts to the chassis for extra strength. Available in a range of finishes and lengths.



PART #	NAME	LENGTH (MM)	OFFSET (MM)	FINISH	LUG	BASE HOLES	BASE LENGTH (MM)	WEIGHT (KG)
STCPOL625	Stainless Chassis Pole Offset Lug 625 Long	625	150	Polish	Yes	2	87	3.4
STCPOL700	Stainless Chassis Pole Offset Lug 700 Long	700	150	Polish	Yes	2	87	3.5
STCPOL	Stainless Chassis Pole Offset Lug 750 Long	750	150	Polish	Yes	2	87	3.6
STCPOL-MATT	Stainless Chassis Pole Offset Lug Matt Finish 750 Long	750	150	Matt / Satin	Yes	2	87	3.6

The base stainless steel pipe has two holes - one 17mm diameter and one 10mm diameter

# Mudflap Range



## Discover the difference

### The ultimate on-road presence & performance



**A range of sizes**



**High performing materials**



**Two material options**



**White or black**



**Branded options**



**NZ made**



**100% Recyclable**

**No minimum quantity order**

#### MATERIAL OPTIONS

We know from our extensive performance testing on mudguards that not all materials are created equal, so we created two materials for you to choose from.

It's hard to explain how different these are, so we threw the challenge to "RHINO™ Guy" to undertake some very technical flexibility analysis – best shown in the photos below.

##### **RHINO™ STANDARD PLASTIC**

**A well-performing mudflap that is economical**

Strong performance with more rigidity while still providing some flexibility



##### **RHINO™ PREMIUM FLEXIBLE PLASTIC**

**A super-flexible mudflap with advanced performance**

Additional strength and significant flexibility - see the flex below!



## RHINO™ MUDFLAPS - FOR DUALS

MEASUREMENT	MATERIAL	COLOUR	PART #	MEASUREMENT	MATERIAL	COLOUR	PART #
	STANDARD PLASTIC	WHITE	MFPL6191WHITE		STANDARD PLASTIC	WHITE	MFPL6146WHITE
		BLACK	MFPL6191BLACK			BLACK	MFPL6146BLACK
	PREMIUM FLEXIBLE	WHITE	MFPREM6191WHITE		PREMIUM FLEXIBLE	WHITE	MFPREM6146WHITE
		BLACK	MFPREM6191BLACK			BLACK	MFPREM6146BLACK
	STANDARD PLASTIC	WHITE	MFPL6176WHITE		STANDARD PLASTIC	WHITE	MFPL6138WHITE
		BLACK	MFPL6176BLACK			BLACK	MFPL6138BLACK
	PREMIUM FLEXIBLE	WHITE	MFPREM6176WHITE		PREMIUM FLEXIBLE	WHITE	MFPREM6138WHITE
		BLACK	MFPREM6176BLACK			BLACK	MFPREM6138BLACK
	STANDARD PLASTIC	WHITE	MFPL6161WHITE		STANDARD PLASTIC	WHITE	MFPL6130WHITE
		BLACK	MFPL6161BLACK			BLACK	MFPL6130BLACK
	PREMIUM FLEXIBLE	WHITE	MFPREM6161WHITE		PREMIUM FLEXIBLE	WHITE	MFPREM6130WHITE
		BLACK	MFPREM6161BLACK			BLACK	MFPREM6130BLACK
	STANDARD PLASTIC	WHITE	MFPL6123WHITE		STANDARD PLASTIC	WHITE	MFPL6123WHITE
		BLACK	MFPL6123BLACK			BLACK	MFPL6123BLACK
	PREMIUM FLEXIBLE	WHITE	MFPREM6123WHITE		PREMIUM FLEXIBLE	WHITE	MFPREM6123WHITE
		BLACK	MFPREM6123BLACK			BLACK	MFPREM6123BLACK
	STANDARD PLASTIC	WHITE	MFPL6153WHITE		STANDARD PLASTIC	WHITE	MFPL6115WHITE
		BLACK	MFPL6153BLACK			BLACK	MFPL6115BLACK
	PREMIUM FLEXIBLE	WHITE	MFPREM6153WHITE		PREMIUM FLEXIBLE	WHITE	MFPREM6115WHITE
		BLACK	MFPREM6153BLACK			BLACK	MFPREM6115BLACK

PLASTIC

STAINLESS

ALUMINIUM

CHASSIS  
POLES

**MUDFLAPS**

MOUNTING  
BRACKETS

ACCESSORIES

## RHINO™ MUDFLAPS - FOR SINGLES

MEASUREMENT	MATERIAL	COLOUR	PART #	MEASUREMENT	MATERIAL	COLOUR	PART #
	STANDARD PLASTIC	WHITE	MFPL4646WHITE		STANDARD PLASTIC	WHITE	MFPL4630WHITE
		BLACK	MFPL4646BLACK			BLACK	MFPL4630BLACK
	PREMIUM FLEXIBLE	WHITE	MFPREM4646WHITE		PREMIUM FLEXIBLE	WHITE	MFPREM4630WHITE
		BLACK	MFPREM4646BLACK			BLACK	MFPREM4630BLACK

## RHINO™ MUDFLAPS - FULL WIDTH

MEASUREMENTS	MATERIAL	COLOUR	PART #
	STANDARD PLASTIC	WHITE	MFPL25061WHITE
		BLACK	MFPL25061BLACK
	PREMIUM FLEXIBLE	WHITE	MFPREM25061WHITE
		BLACK	MFPREM25061BLACK



## RHINO™ MUDFLAPS - CUSTOM SIZE

In addition to the standard sizes we also offer large customers custom mudflaps sizing.

### Benefits:

- Faster installation time and reduced labour
- A uniform look of high quality accross all your vehicles
- Customisation for different customers or requirements

### Options:

- Materials: Standard plastic or premium flexible plastic
- Colours: White and black
- Minimum order quantities apply
- Angles or holes



CUSTOM SIZES WE HAVE PRODUCED	
WIDTH	HEIGHT
1190mm/47"	100mm/4"
1225mm/48"	300mm/12"
610mm/24"	175mm/7"
610mm/24"	130mm/5"
610mm/24"	250mm/10"
610mm/24"	610mm/24"
610mm/24"	325mm/13"
610mm/24"	275mm/11"
610mm/24"	430mm/17"
910mm/36"	25mm/1"

## CUSTOM BRANDED

All RHINO™ mudflaps are able to be custom branded with your high quality logo. The print technology we use ensures longevity and achieves excellent detail using multiple colours



**YOUR LOGO  
HERE**

**For a quote on branding your mudflaps, please complete the mudflaps quote form on our website [rhinogroup.co.nz](http://rhinogroup.co.nz)**



## MUDFLAP BARS

RHINO™ alloy mudflap bars are made from high-quality 4.5mm aluminium or 1.2mm stainless steel. These are highly cost effective and save you the time of cutting and punching alloy flat bar. Products are dispatched with the protective film over the aluminium and holes punched. Use the 'WK' (With Kit) code on the end when ordering to include bolt/nut/washer kits to fit.

Mudflap bars provide a means to fit mudflaps to mudguards. Cut to length with holes these make installation a breeze and more cost effective than doing it yourself. Also comes with the option of supplied with nuts, bolts and washers. Designed to fit the width of RHINO™ guards with pre-punched holes to fit mudflaps. The width is the width of the mudflap bar and closely matches the width of the guards. All measurements are in millimetres (mm).

### MUDFLAP BAR – ALUMINIUM



\*Dual mudflap bar shown

PART #	LENGTH (MM)	HEIGHT (MM)	MATERIAL	GUARDS	HOLES
MFBAL422	420	25	4.5mm alloy	Single	3 Holes
MFBAL422WK	420	25	4.5mm alloy	Single	3 holes with bolts, nuts & washers
MFBAL602	600	25	4.5mm alloy	Dual	4 holes
MFBAL602WK	600	25	4.5mm alloy	Dual	4 holes with bolts, nuts & washers

### MUDFLAP BAR – STAINLESS



\*Single mudflap bar shown

PART #	LENGTH (MM)	HEIGHT (MM)	MATERIAL	GUARDS	HOLES
MFBST424	420	40	1.2mm Stainless	Single	3 holes
MFBST424WK	420	40	1.2mm Stainless	Single	3 holes with bolts, nuts & washers
MFBST604	600	40	1.2mm Stainless	Duals	4 holes
MFBST604WK	600	40	1.2mm Stainless	Duals	4 holes with bolts, nuts & washers



## SADDLES

RHINO™ aluminium saddles are the high performance option to fit Chassis Poles. Cast made with options for a standard or polished finish. Supplied with nuts, bolts, washers, rubber isolating pads and backing plates. Outer holes are at 200mm centers.

### ALUMINIUM SADDLES



PART #	NAME	WEIGHT (KG)
ASC	Aluminium Cast Saddle	0.7
ASCP	Aluminium Cast Saddle Polished	0.7

### PLASTIC SADDLES

High quality RHINO™ Plastic Saddle to fit Chassis Poles. Made from glass reinforced nylon and available in a range of colours below with more in the pipeline. Supplied with nuts, bolts, washers and centre screw. Outer holes are at 232mm centers. Weight 430gm.



\*209 Light green not pictured.  
Other colours in development

PART #	NAME
PLSAD-BLACK	Plastic Saddle Black
PLSAD-RED	Plastic Saddle Red
PLSAD-GREY	Plastic Saddle Grey/Silver
PLSAD-WHITE	Plastic Saddle White
PLSAD-208	Plastic Saddle Dark Green
PLSAD-209	Plastic Saddle Light Green
PLSAD-325	Plastic Saddle Light Blue
PLSAD-326	Plastic Saddle Medium Blue
PLSAD-369	Plastic Saddle Dark Blue

## PLASTIC CLAMPS

High quality RHINO™ Plastic Clamp to fit Chassis Poles. Made from glass reinforced nylon and available in a range of colours below with more in the pipeline. Supplied with nuts, bolts, washers. 2 x holes are at 78mm centres. Weight 175gm.



PART #	NAME
PLCL-117	Plastic Clamp Yellow
PLCL-208	Plastic Clamp Dark Green
PLCL-325	Plastic Clamp Light Blue
PLCL-326	Plastic Clamp Medium Blue
PLCL-370	Plastic Clamp Dark Blue
PLCL-70	Plastic Clamp Black
PLCL-816	Plastic Clamp Grey/Silver
PLCL-RED	Plastic Clamp Red
PLCL-WHITE	Plastic Clamp White



PLASTIC

STAINLESS

ALUMINIUM

CHASSIS  
POLES

MUDFLAPS

**MOUNTING  
BRACKETS**

ACCESSORIES

## Light Bars

L.E.D rear, stop and turn lights mounted in a stainless steel folder section, bolts to two cast aluminium saddles. Fits onto 40NB chassis poles. Lights are mounted. Photos show with optional chrome bezel.

### 38CM LIGHT BAR



PART #	NAME	WEIGHT
LB38RE	L.E.D light bar 38cm rectangular lights, bolts centre 38cm	3.18
LBARV7013	Optional chrome bezel	

### 49CM LIGHT BAR



PART #	NAME	WEIGHT
LB49RE	L.E.D light bar 49cm rectangular lights, bolts centre 49cm	3.18
LBARV7013	Optional chrome bezel	



## END CAPS

Plastic end caps to fit in the outer and inner end of RHINO™ chassis poles. Available in a range of colours and stainless steel to suit.

### CAP 40



PART #	NAME
CAP40 BLACK	CAP40 outer end of pole black
CAP40 GREY	CAP40 outer end of pole grey
CAP40 208 DARK GREEN	CAP40 outer end of pole dark green
CAP40 WHITE	CAP40 outer end of pole white
CAP40 325	CAP40 outer end of light blue
STCAP40	Stainless steel cap outer end of pole

### CAP 50



PART #	NAME
CAP50 BLACK	CAP50 inner end of pole black
CAP50 GREY	CAP50 inner end of pole grey
CAP50 208	CAP50 inner end of pole dark green
CAP50 WHITE	CAP50 inner end of pole white
CAP50 325	CAP50 inner end of pole light blue
STCAP50	Stainless steel cap inner end of pole

## Reflector Pole Cap Outer End - R40

Reflective polycarbonate end cap to fit in the outer end of RHINO™ chassis poles. The caps have a small diameter of 41.8mm and the large diameter is 48mm.

### R40



PART #	NAME
R40	Reflector Cap Outer End

## L.E.D LIGHT POLE END CAP OUTER END - LR40

LED light to fit in the outer end of RHINO™ chassis poles. Multivolt and supplied with 1500mm of lead. The caps have a small diameter of 41.8mm and the large diameter is 48mm.

An expanded foam section is supplied, this is pushed into the pole to support the weight of the wire joint bund.



PART #	NAME
LR40	LED Light Pole Cap – Outer End



## Spray Suppressant

Flexible spray suppressant available in 100mm length is standard. Sold in 1800mm kits or by the metre. Fits inside the F Clip or H Clip.

### SPRAY SUPPRESSANT BRUSH



### SPRAY SUPPRESSANT F ROUND / H ROUND

Aluminium extruded "F" Round OR "H" Round profile that has been rolled for parallel mounting flexible spray suppressant to guards.

Options in F and H in common guard sizes, 20mm wide:



### SPRAY SUPPRESSANT H



### SPRAY SUPPRESSANT F



PART #	NAME
SS100	SPRAY SUPPRESSANT 100mm wide

PART #	NAME
SSFROUND1000	SPRAY SUPPRESSANT F ROUND FIT 1000 SPAN (mm) GUARD
SSFROUND1050	SPRAY SUPPRESSANT F ROUND FIT 1050 SPAN (mm) GUARD
SSFROUND1100	SPRAY SUPPRESSANT F ROUND FIT 1100 SPAN (mm) GUARD
SSFROUND1200	SPRAY SUPPRESSANT F ROUND FIT 1200 SPAN (mm) GUARD
SSHROUND1000	SPRAY SUPPRESSANT H ROUND FIT 1000 SPAN (mm) GUARD
SSHROUND1050	SPRAY SUPPRESSANT H ROUND FIT 1050 SPAN (mm) GUARD
SSHROUND1100	SPRAY SUPPRESSANT H ROUND FIT 1100 SPAN (mm) GUARD
SSHROUND1200	SPRAY SUPPRESSANT H ROUND FIT 1200 SPAN (mm) GUARD

Aluminium extruded "h" profile for parallel mounting flexible spray suppressant, 20 mm wide. Options include the following:

PART #	NAME
SSHCLIP	SPRAY SUPPRESSANT H CLIPS (PACK OF 9)
SSKIT-H	SPRAY SUPPRESSANT BRUSH + H CLIPS
SSH3000	SPRAY SUPPRESSANT H CLIP - 3 METRES LENGTH

Aluminium extruded "F" profile for parallel mounting flexible spray suppressant, 20 mm wide. Options include the following:

PART #	NAME
SSFCLIP	SPRAY SUPPRESSANT F CLIPS (PACK OF 9)
SSKIT-F	SPRAY SUPPRESSANT BRUSH + F CLIPS
SSF3000	SPRAY SUPPRESSANT F CLIP - 3 METRES LENGTH

PLASTIC

STAINLESS

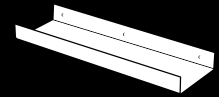
ALUMINIUM

CHASSIS  
POLES

MUDFLAPS

MOUNTING  
BRACKETS

ACCESSORIES



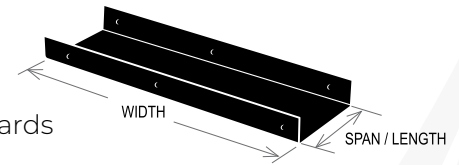
## Infill Spacers

Infill spacers fit between the guards and add stability to guard fittings, reduce spray and make for a classy finish. There are two options – the box or U shape and are manufactured ready for installation. Infill spacers are available in either aluminium or stainless and come in a range of spans and widths to suit your requirements.

### Measuring guide:

Span – distance on the top of the infill spacer between the guards

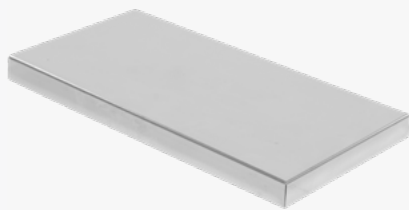
Width – width of the spacer and closely matches the width of the guards



### ALUMINIUM BOX WELD

These top of the range spacers are expertly welded to give the best finish. Boxed spacers are flat on top with folds on three sides with the inside edge facing the chassis left open. The folds on the widths are at 90 degrees to fit the bottom of the guard.

Made to fit most guards in the RHINO™ range the standard width is 600mm and standard height is 40mm. Standard material is 3mm.

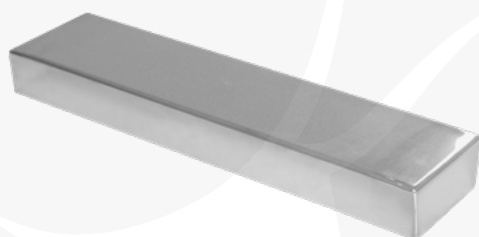


ALLOY PART WELD #	SPAN (MM)	WIDTH (MM)	HEIGHT (MM)
IFBALW1060	100	600	40
IFBALW1260	125	600	40
IFBALW1560	150	600	40
IFBALW1760	175	600	40
IFBALW2060	200	600	40
IFBALW2260	225	600	40
IFBALW2560	250	600	40
IFBALW2760	275	600	40
IFBALW3060	300	600	40
IFBALW3260	325	600	40
IFBALW3560	350	600	40
Minimum quantities apply			

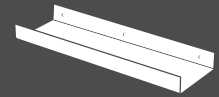
### STAINLESS BOX WELD

These top of the range spacers are expertly welded, buffed and polished to give the best finish. Boxed spacers are flat on top with folds on three sides with the inside edge facing the chassis left open. The folds on the widths are at 90 degrees to fit the bottom of the guard.

Made to fit most guards in the RHINO™ range the standard width is 600mm and standard height is 40mm. Standard material is 1.2mm Stainless steel 304 Bright Annealed.



STAINLESS PART WELD #	SPAN (MM)	WIDTH (MM)	HEIGHT (MM)
IFBSTW1060	100	600	40
IFBSTW1260	125	600	40
IFBSTW1560	150	600	40
IFBSTW1760	175	600	40
IFBSTW2060	200	600	40
IFBSTW2260	225	600	40
IFBSTW2560	250	600	40
IFBSTW2760	275	600	40
IFBSTW3060	300	600	40
IFBSTW3260	325	600	40
IFBSTW3560	350	600	40
Minimum quantities apply			



PLASTIC

STAINLESS

ALUMINIUM

CHASSIS  
POLES

MUDFLAPS

MOUNTING  
BRACKETS

ACCESSORIES

## INFILL SPACERS – ALUMINIUM BOX U SHAPE

U-shaped infill spacers are flat with a fold at each end to connect to the guards. The folds on the widths are at 90 degrees to fit the bottom of the guard.

Made to fit most guards in the RHINO™ range the standard width is 600mm and standard height is 40mm. Standard material is 3mm.



ALLOY PART WELD #	SPAN (MM)	WIDTH (MM)	HEIGHT (MM)
IFUAL1060	100	600	40
IFUAL1260	125	600	40
IFUAL1560	150	600	40
IFUAL1760	175	600	40
IFUAL2060	200	600	40
IFUAL2260	225	600	40
IFUAL2560	250	600	40
IFUAL2760	275	600	40
IFUAL3060	300	600	40
IFUAL3260	325	600	40
IFUAL3560	350	600	40
Minimum quantities apply			

## INFILL SPACERS – STAINLESS BOX U SHAPE

U-shaped infill spacers are flat with a fold at each end to connect to the guards. The folds on the widths are at 90 degrees to fit the bottom of the guard.

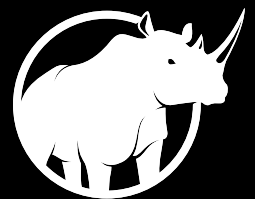
Made to fit most guards in the RHINO™ range the standard width is 600mm and standard height is 40mm.

Standard material is 1.2mm Stainless steel 304 Bright Annealed.



STAINLESS PART WELD #	SPAN (MM)	WIDTH (MM)	HEIGHT (MM)
IFUST1060	100	600	40
IFUST1260	125	600	40
IFUST1560	150	600	40
IFUST1760	175	600	40
IFUST2060	200	600	40
IFUST2260	225	600	40
IFUST2560	250	600	40
IFUST2760	275	600	40
IFUST3060	300	600	40
IFUST3260	325	600	40
IFUST3560	350	600	40
Minimum quantities apply			

# TRUCK AND TRAILER PRODUCT CATALOGUE



**RHINO**

[rhinogroup.co.nz](http://rhinogroup.co.nz) [rhinoguards.com.au](http://rhinoguards.com.au)

---

[sales@mudguards.co.nz](mailto:sales@mudguards.co.nz) NZ +64 7 347 9363 AU +61 2 7908 7961