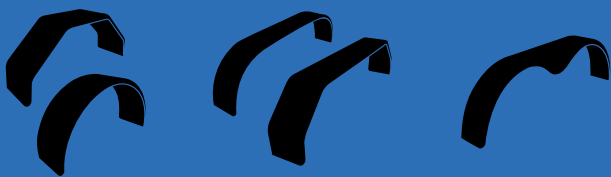


RHINO

Light Trailer Product Catalogue



rhinogroup.co.nz







RHINO

Our manufacturing operation in Rotorua, New Zealand has been trusted by trailer manufacturers in New Zealand and internationally for over 30 years.

Our highly-skilled, New Zealand-based team manufactures mudguards that are safe, high-performing and visually appealing. We offer a full range of material, design and sizing options. Rhino mudguards have a number of performance or safety enhancing features with optional extras to improve your brand presence or manufacturing efficiency.


For exports we have two options being in close proximity to the both the Port of Tauranga (78km) and the Ports of Auckland (226km).

We offer very competitive trade prices for large orders as we supply many leading light trailer manufacturers. Account applications and ordering are simple and can be done online, via email or phone.

Rhino guards are used on a huge range of light trailers in NZ and Australia including:

- 4 x 4 / 4WD
- Bike trailers
- Boat trailers
- Box trailers
- Cage trailers
- Car trailers
- Car transporter trailers
- Campervans and caravans
- Choppers and hot rods
- Commercial trailers
- Custom trailers
- Enclosed trailers
- Farm trailers
- Golf buggys
- Horse floats
- Jet ski trailers
- Lawnmowers
- Mini truck / mini tub
- Offroad trailers
- Plant trailers
- Race cars
- RV
- Tipping trailers
- Utes and ute decks
- Yard trailers

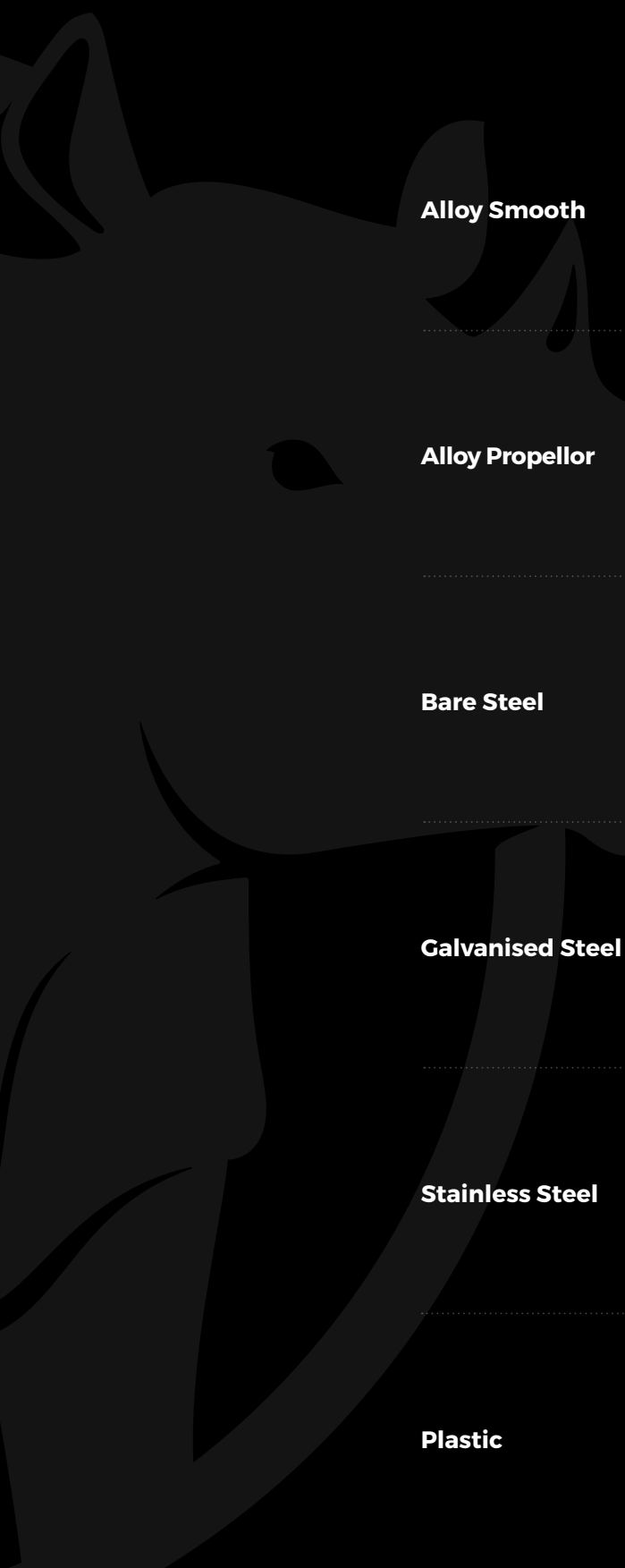
 Ports of Auckland

 Port of Tauranga

ROTORUA,
NEW ZEALAND



Light Trailer Guards Range



Alloy Smooth

Alloy Propellor

Bare Steel

Galvanised Steel

Stainless Steel

Plastic

SINGLES

Round Top

Flat Top



TANDEM

Round Top

Flat Top

Alloy Smooth



Alloy Propellor



Bare Steel



Galvanised Steel



Stainless Steel



Teardrop

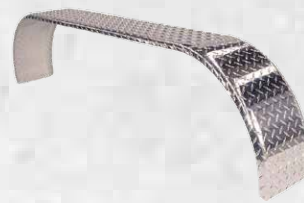
Alloy Propellor



TRIAXLE

Round Top

Flat Top



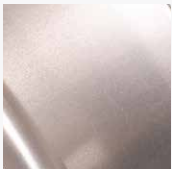
Key Decisions

There are three key decisions to make when selecting guards – material, design and guard size.

1 Material

We have a range of different options for you to consider when selecting your guard – these are listed in alphabetical order. We don't have a preference for materials – our range reflects the needs of our customers developed from over 30 years in the business.

Alloy Smooth



Alloy as a material type is growing in popularity, particularly in the boat trailer market. All alloy guards are 3mm thick. Dispatched with a laser film on one side.

Galvanised Steel



Galvanised steel is a highly popular option as the material is already galvanised and usually only requires bolting onto the chassis or fixing plates. The standard material thickness we use is 1.6mm and it is cold rolled. Trailers destined for more heavy duty usage should consider using material thickness of 2mm or 2.5mm.

Alloy Propellor



Alloy propellor offers grip on the guards removing the need for additional post-build grips. Propellor base thickness is 3mm, with total thickness 5.4mm taking into account the patterns.

Plastic



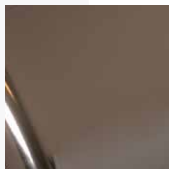
Plastic mudguards are rotationally moulded from virgin high grade polyethylene or recycled mudguard plastic. The range covers singles in a range of sizes with 18 colours to choose from. These are tough mudguards, designed for extreme UV and weather conditions.

Bare Steel



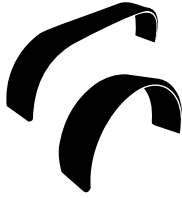
As the name suggests, the steel is bare and without any treatment it is prone to rust. The standard material thickness we use is 1.6mm and it is cold rolled. For heavy-duty use we offer a 2mm or 2.5mm option. Hot rolled steel is too hard.

Stainless Steel



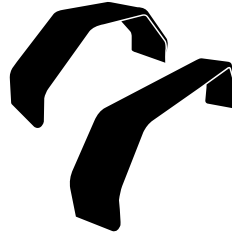
Stainless steel is used for a top class finish and is priced accordingly. Please be aware in high-use and/or harsh environments it may scratch. We use 304 stainless steel bright annealed (BA) finish that is cold rolled to retain a highly reflective finish. Stainless steel mudguards are manufactured and dispatched with a PVC film on one side.

2 Design Rhino mudguards are known for high performance and top quality finish and come with three design options.



Round Top

Signature stylish round design



Flat Top

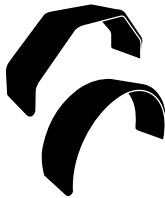
Practical flat top design



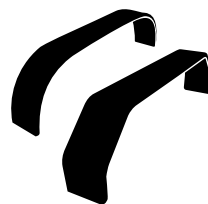
Teardrop

Added style and reduced spray

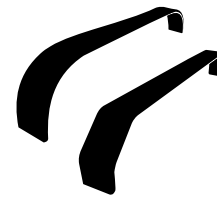
3 Guard size Guards are available in single, tandem and triaxle options.



Single

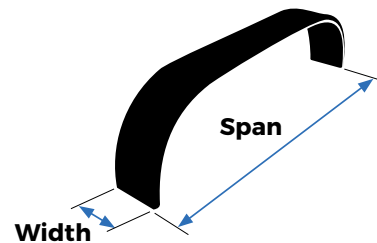
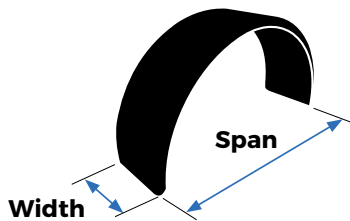


Tandem



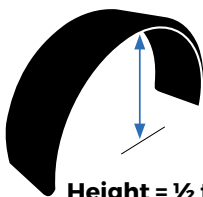
Triaxle

SIZING How to measure the span and width of the tyre or guard size required.



For the best fit, we recommend measuring the span and width of the wheels. Then add your desired amount of clearance, e.g. for the span between 50mm-100mm from the wheel (less if you want a close fit, more if you require more clearance). This will give you the span and width of the mudguard and you can use this to select your guard.

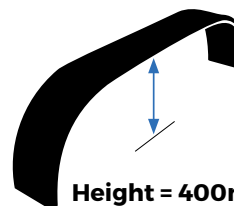
DIMENSIONS



Height = ½ the span

Singles

The height of single guards are half the span, so a 700mm span guard will be 350mm high. Tolerances are +/- 15mm in length and height and -5mm in width. Custom heights are available on request for bulk orders.



Height = 400mm

Tandems and Triaxles

The height of tandem and triaxle guards are 400mm high. Tolerances are +/- 15mm in length and height and -5mm in width. Custom heights are available on request for bulk orders.

Product Features



Curved radius edges

Curved radius edge on both sides of the guards to give a close fit to the wheel and reduce spray.



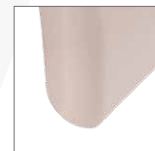
Laser engraving

Laser engraving on custom orders to showcase your brand and allow easy identification for replacement parts.



Holes (optional)

Custom-defined holes for mounting to give you faster installation. Minimum order quantity applies. Subject to design and manufacturing specifications.



Rounded edges

Rounded notched edges on all corners giving a stylish and safe finish.

Freight

Orders are packed to ensure products are protected/stable during transit and freight costs are minimised. We use international freight companies with full track and trace capability and we offer a door to door freight service. Export pallets are used for international orders. Please see page 1 for details on our close proximity to ports.

SMALL ORDERS

Small orders are packed in pairs and wrapped in cardboard to meet weight limits set from freight companies.



LARGE ORDERS

Large orders are packed on a pallet to maximise freight efficiencies. Depending on the size of the order, the type of guards and the freight destination, strapping may be applied.





ALLOY SMOOTH

Standard material is 3mm aluminium smooth, Grade 5005 Temper H32.

SINGLE ROUND ALUMINIUM SMOOTH



SPAN (MM)	WIDTH (MM)					
	175	200	225	250	275	300
600	CTALS6017	CTALS6020	CTALS6022	CTALS6025	CTALS6027	CTALS6030
650	CTALS6517	CTALS6520	CTALS6522	CTALS6525	CTALS6527	CTALS6530
700	CTALS7017	CTALS7020	CTALS7022	CTALS7025	CTALS7027	CTALS7030
750	CTALS7517	CTALS7520	CTALS7522	CTALS7525	CTALS7527	CTALS7530
800	CTALS8017	CTALS8020	CTALS8022	CTALS8025	CTALS8027	CTALS8030
850	CTALS8517	CTALS8520	CTALS8522	CTALS8525	CTALS8527	CTALS8530
900	CTALS9017	CTALS9020	CTALS9022	CTALS9025	CTALS9027	CTALS9030
950	CTALS9517	CTALS9520	CTALS9522	CTALS9525	CTALS9527	CTALS9530

SINGLE FLAT TOP ALUMINIUM SMOOTH



SPAN (MM)	WIDTH (MM)				
	200	225	250	275	300
1200	CTALSF12020	CTALSF12022	CTALSF12025	CTALSF12027	CTALSF12030
1300	CTALSF13020	CTALSF13022	CTALSF13025	CTALSF13027	CTALSF13030
1400	CTALSF14020	CTALSF14022	CTALSF14025	CTALSF14027	CTALSF14030
1500	CTALSF15020	CTALSF15022	CTALSF15025	CTALSF15027	CTALSF15030
1600	CTALSF16020	CTALSF16022	CTALSF16025	CTALSF16027	CTALSF16030
1700	CTALSF17020	CTALSF17022	CTALSF17025	CTALSF17027	CTALSF17030
1800	CTALSF18020	CTALSF18022	CTALSF18025	CTALSF18027	CTALSF18030
1900	CTALSF19020	CTALSF19022	CTALSF19025	CTALSF19027	CTALSF19030

ALLOY PROPELLOR

Standard material is 3mm aluminium propellor checkerplate, Grade 3003 Temper H224.

SINGLE ROUND ALUMINIUM PROPELLOR PLATE



SPAN (MM)	WIDTH (MM)					
	175	200	225	250	275	300
600	CTALPR6017	CTALPR6020	CTALPR6022	CTALPR6025	CTALPR6027	CTALPR6030
650	CTALPR6517	CTALPR6520	CTALPR6522	CTALPR6525	CTALPR6527	CTALPR6530
700	CTALPR7017	CTALPR7020	CTALPR7022	CTALPR7025	CTALPR7027	CTALPR7030
750	CTALPR7517	CTALPR7520	CTALPR7522	CTALPR7525	CTALPR7527	CTALPR7530
800	CTALPR8017	CTALPR8020	CTALPR8022	CTALPR8025	CTALPR8027	CTALPR8030
850	CTALPR8517	CTALPR8520	CTALPR8522	CTALPR8525	CTALPR8527	CTALPR8530
900	CTALPR9017	CTALPR9020	CTALPR9022	CTALPR9025	CTALPR9027	CTALPR9030
950	CTALPR9517	CTALPR9520	CTALPR9522	CTALPR9525	CTALPR9527	CTALPR9530

SINGLE FLAT TOP ALUMINIUM PROPELLOR PLATE



SPAN (MM)	WIDTH (MM)					
	175	200	225	250	275	300
600	CTALPRF6017	CTALPRF6020	CTALPRF6022	CTALPRF6025	CTALPRF6027	CTALPRF6030
650	CTALPRF6517	CTALPRF6520	CTALPRF6522	CTALPRF6525	CTALPRF6527	CTALPRF6530
700	CTALPRF7017	CTALPRF7020	CTALPRF7022	CTALPRF7025	CTALPRF7027	CTALPRF7030
750	CTALPRF7517	CTALPRF7520	CTALPRF7522	CTALPRF7525	CTALPRF7527	CTALPRF7530
800	CTALPRF8017	CTALPRF8020	CTALPRF8022	CTALPRF8025	CTALPRF8027	CTALPRF8030
850	CTALPRF8517	CTALPRF8520	CTALPRF8522	CTALPRF8525	CTALPRF8527	CTALPRF8530
900	CTALPRF9017	CTALPRF9020	CTALPRF9022	CTALPRF9025	CTALPRF9027	CTALPRF9030
950	CTALPRF9517	CTALPRF9520	CTALPRF9522	CTALPRF9525	CTALPRF9527	CTALPRF9530



BARE STEEL

Standard material is 1.6mm cold rolled bare steel. 2mm available on request.

SINGLE ROUND BARE STEEL



SPAN (MM)	WIDTH (MM)						
	150	175	200	225	250	275	300
550	Available on request						
600	CTBC6015	CTBC6017	CTBC6020	CTBC6022	CTBC6025	CTBC6027	CTBC6030
650	CTBC6515	CTBC6517	CTBC6520	CTBC6522	CTBC6525	CTBC6527	CTBC6530
700	CTBC7015	CTBC7017	CTBC7020	CTBC7022	CTBC7025	CTBC7027	CTBC7030
750	CTBC7515	CTBC7517	CTBC7520	CTBC7522	CTBC7525	CTBC7527	CTBC7530
800	CTBC8015	CTBC8017	CTBC8020	CTBC8022	CTBC8025	CTBC8027	CTBC8030
850	CTBC8515	CTBC8517	CTBC8520	CTBC8522	CTBC8525	CTBC8527	CTBC8530
900	CTBC9015	CTBC9017	CTBC9020	CTBC9022	CTBC9025	CTBC9027	CTBC9030
950	CTBC9515	CTBC9517	CTBC9520	CTBC9522	CTBC9525	CTBC9527	CTBC9530

SINGLE FLAT TOP BARE STEEL



SPAN (MM)	WIDTH (MM)						
	150	175	200	225	250	275	300
550	Available on request						
600	CTBCF6015	CTBCF6017	CTBCF6020	CTBCF6022	CTBCF6025	CTBCF6027	CTBCF6030
650	CTBCF6515	CTBCF6517	CTBCF6520	CTBCF6522	CTBCF6525	CTBCF6527	CTBCF6530
700	CTBCF7015	CTBCF7017	CTBCF7020	CTBCF7022	CTBCF7025	CTBCF7027	CTBCF7030
750	CTBCF7515	CTBCF7517	CTBCF7520	CTBCF7522	CTBCF7525	CTBCF7527	CTBCF7530
800	CTBCF8015	CTBCF8017	CTBCF8020	CTBCF8022	CTBCF8025	CTBCF8027	CTBCF8030
850	CTBCF8515	CTBCF8517	CTBCF8520	CTBCF8522	CTBCF8525	CTBCF8527	CTBCF8530
900	CTBCF9015	CTBCF9017	CTBCF9020	CTBCF9022	CTBCF9025	CTBCF9027	CTBCF9030
950	CTBCF9515	CTBCF9517	CTBCF9520	CTBCF9522	CTBCF9525	CTBCF9527	CTBCF9530

GALVANISED STEEL

Standard material is 1.6mm galvanised steel. 2mm available on request.

SINGLE ROUND GALVANISED



SPAN (MM)	WIDTH (MM)						
	150	175	200	225	250	275	300
550	Available on request						
600	CTGA6015	CTGA6017	CTGA6020	CTGA6022	CTGA6025	CTGA6027	CTGA6030
650	CTGA6515	CTGA6517	CTGA6520	CTGA6522	CTGA6525	CTGA6527	CTGA6530
700	CTGA7015	CTGA7017	CTGA7020	CTGA7022	CTGA7025	CTGA7027	CTGA7030
750	CTGA7515	CTGA7517	CTGA7520	CTGA7522	CTGA7525	CTGA7527	CTGA7530
800	CTGA8015	CTGA8017	CTGA8020	CTGA8022	CTGA8025	CTGA8027	CTGA8030
850	CTGA8515	CTGA8517	CTGA8520	CTGA8522	CTGA8525	CTGA8527	CTGA8530
900	CTGA9015	CTGA9017	CTGA9020	CTGA9022	CTGA9025	CTGA9027	CTGA9030
950	CTGA9515	CTGA9517	CTGA9520	CTGA9522	CTGA9525	CTGA9527	CTGA9530

SINGLE FLAT TOP GALVANISED



SPAN (MM)	WIDTH (MM)						
	150	175	200	225	250	275	300
550	Available on request						
600	CTGAF6015	CTGAF6017	CTGAF6020	CTGAF6022	CTGAF6025	CTGAF6027	CTGAF6030
650	CTGAF6515	CTGAF6517	CTGAF6520	CTGAF6522	CTGAF6525	CTGAF6527	CTGAF6530
700	CTGAF7015	CTGAF7017	CTGAF7020	CTGAF7022	CTGAF7025	CTGAF7027	CTGAF7030
750	CTGAF7515	CTGAF7517	CTGAF7520	CTGAF7522	CTGAF7525	CTGAF7527	CTGAF7530
800	CTGAF8015	CTGAF8017	CTGAF8020	CTGAF8022	CTGAF8025	CTGAF8027	CTGAF8030
850	CTGAF8515	CTGAF8517	CTGAF8520	CTGAF8522	CTGAF8525	CTGAF8527	CTGAF8530
900	CTGAF9015	CTGAF9017	CTGAF9020	CTGAF9022	CTGAF9025	CTGAF9027	CTGAF9030
950	CTGAF9515	CTGAF9517	CTGAF9520	CTGAF9522	CTGAF9525	CTGAF9527	CTGAF9530



PLASTIC

Plastic mudguards are rotationally moulded from virgin high grade polyethylene or recycled mudguard plastic. The range covers singles in a range of sizes with 18 colours to choose from. These are tough mudguards, designed for extreme UV and weather conditions.

SINGLE PLASTIC



PART#	SPAN	WIDTH
CTPL750	750	230
CTPL7526	750	260
CTPL7532	750	320
CTPL800	800	230
CTPL9028	900	280

RV PLASTIC



PART #	SPAN	WIDTH
RV 7525	750	250
RV 7545	750	450
RV 9025	900	250
RV 9030	900	300

STAINLESS STEEL

SINGLE ROUND STAINLESS STEEL

Standard material is 1.2mm stainless steel 304 bright annealed (BA) finish.



SPAN (MM)	WIDTH (MM)						
	150	175	200	225	250	275	300
600	CTST6015	CTST6017	CTST6020	CTST6022	CTST6025	CTST6027	CTST6030
650	CTST6515	CTST6517	CTST6520	CTST6522	CTST6525	CTST6527	CTST6530
700	CTST7015	CTST7017	CTST7020	CTST7022	CTST7025	CTST7027	CTST7030
750	CTST7515	CTST7517	CTST7520	CTST7522	CTST7525	CTST7527	CTST7530
800	CTST8015	CTST8017	CTST8020	CTST8022	CTST8025	CTST8027	CTST8030
850	CTST8515	CTST8517	CTST8520	CTST8522	CTST8525	CTST8527	CTST8530
900	CTST9015	CTST9017	CTST9020	CTST9022	CTST9025	CTST9027	CTST9030
950	CTST9515	CTST9517	CTST9520	CTST9522	CTST9525	CTST9527	CTST9530



ALLOY SMOOTH

Standard alloy material is 3mm aluminium smooth, Grade 5005 Temper H32.

TANDEM ROUND ALUMINIUM SMOOTH



SPAN (MM)	WIDTH (MM)				
	200	225	250	275	300
1200	CTALS12020	CTALS12022	CTALS12025	CTALS12027	CTALS12030
1300	CTALS13020	CTALS13022	CTALS13025	CTALS13027	CTALS13030
1400	CTALS14020	CTALS14022	CTALS14025	CTALS14027	CTALS14030
1500	CTALS15020	CTALS15022	CTALS15025	CTALS15027	CTALS15030
1600	CTALS16020	CTALS16022	CTALS16025	CTALS16027	CTALS16030
1700	CTALS17020	CTALS17022	CTALS17025	CTALS17027	CTALS17030
1800	CTALS18020	CTALS18022	CTALS18025	CTALS18027	CTALS18030
1900	CTALS19020	CTALS19022	CTALS19025	CTALS19027	CTALS19030

TANDEM FLAT TOP ALUMINIUM SMOOTH



SPAN (MM)	WIDTH (MM)				
	200	225	250	275	300
1200	CTALSF12020	CTALSF12022	CTALSF12025	CTALSF12027	CTALSF12030
1300	CTALSF13020	CTALSF13022	CTALSF13025	CTALSF13027	CTALSF13030
1400	CTALSF14020	CTALSF14022	CTALSF14025	CTALSF14027	CTALSF14030
1500	CTALSF15020	CTALSF15022	CTALSF15025	CTALSF15027	CTALSF15030
1600	CTALSF16020	CTALSF16022	CTALSF16025	CTALSF16027	CTALSF16030
1700	CTALSF17020	CTALSF17022	CTALSF17025	CTALSF17027	CTALSF17030
1800	CTALSF18020	CTALSF18022	CTALSF18025	CTALSF18027	CTALSF18030
1900	CTALSF19020	CTALSF19022	CTALSF19025	CTALSF19027	CTALSF19030

ALLOY PROPELLOR

Standard material is 3mm aluminium propellor checkerplate, Grade 3003 Temper H224.

TANDEM ROUND ALUMINIUM PROPELLOR PLATE



SPAN (MM)	WIDTH (MM)				
	200	225	250	275	300
1200	CTALPR12020	CTALPR12022	CTALPR12025	CTALPR12027	CTALPR12030
1300	CTALPR13020	CTALPR13022	CTALPR13025	CTALPR13027	CTALPR13030
1400	CTALPR14020	CTALPR14022	CTALPR14025	CTALPR14027	CTALPR14030
1500	CTALPR15020	CTALPR15022	CTALPR15025	CTALPR15027	CTALPR15030
1600	CTALPR16020	CTALPR16022	CTALPR16025	CTALPR16027	CTALPR16030
1700	CTALPR17020	CTALPR17022	CTALPR17025	CTALPR17027	CTALPR17030
1800	CTALPR18020	CTALPR18022	CTALPR18025	CTALPR18027	CTALPR18030
1900	CTALPR19020	CTALPR19022	CTALPR19025	CTALPR19027	CTALPR19030

TANDEM FLAT TOP ALUMINIUM PROPELLOR PLATE



SPAN (MM)	WIDTH (MM)				
	200	225	250	275	300
1200	CTALPRF12020	CTALPRF12022	CTALPRF12025	CTALPRF12027	CTALPRF12030
1300	CTALPRF13020	CTALPRF13022	CTALPRF13025	CTALPRF13027	CTALPRF13030
1400	CTALPRF14020	CTALPRF14022	CTALPRF14025	CTALPRF14027	CTALPRF14030
1500	CTALPRF15020	CTALPRF15022	CTALPRF15025	CTALPRF15027	CTALPRF15030
1600	CTALPRF16020	CTALPRF16022	CTALPRF16025	CTALPRF16027	CTALPRF16030
1700	CTALPRF17020	CTALPRF17022	CTALPRF17025	CTALPRF17027	CTALPRF17030
1800	CTALPRF18020	CTALPRF18022	CTALPRF18025	CTALPRF18027	CTALPRF18030
1900	CTALPRF19020	CTALPRF19022	CTALPRF19025	CTALPRF19027	CTALPRF19030



BARE STEEL

Standard material is 1.6mm cold rolled bare steel. 2mm available on request.

TANDEM ROUND BARE STEEL



SPAN (MM)	WIDTH (MM)				
	200	225	250	275	300
1200	CTBC12020	CTBC12022	CTBC12025	CTBC12027	CTBC12030
1300	CTBC13020	CTBC13022	CTBC13025	CTBC13027	CTBC13030
1400	CTBC14020	CTBC14022	CTBC14025	CTBC14027	CTBC14030
1500	CTBC15020	CTBC15022	CTBC15025	CTBC15027	CTBC15030
1600	CTBC16020	CTBC16022	CTBC16025	CTBC16027	CTBC16030
1700	CTBC17020	CTBC17022	CTBC17025	CTBC17027	CTBC17030
1800	CTBC18020	CTBC18022	CTBC18025	CTBC18027	CTBC18030
1900	CTBC19020	CTBC19022	CTBC19025	CTBC19027	CTBC19030

TANDEM FLAT TOP BARE STEEL



SPAN (MM)	WIDTH (MM)				
	200	225	250	275	300
1200	CTBCF12020	CTBCF12022	CTBCF12025	CTBCF12027	CTBCF12030
1300	CTBCF13020	CTBCF13022	CTBCF13025	CTBCF13027	CTBCF13030
1400	CTBCF14020	CTBCF14022	CTBCF14025	CTBCF14027	CTBCF14030
1500	CTBCF15020	CTBCF15022	CTBCF15025	CTBCF15027	CTBCF15030
1600	CTBCF16020	CTBCF16022	CTBCF16025	CTBCF16027	CTBCF16030
1700	CTBCF17020	CTBCF17022	CTBCF17025	CTBCF17027	CTBCF17030
1800	CTBCF18020	CTBCF18022	CTBCF18025	CTBCF18027	CTBCF18030
1900	CTBCF19020	CTBCF19022	CTBCF19025	CTBCF19027	CTBCF19030

GALVANISED STEEL

Standard material is 1.6mm galvanised steel. 2mm on request.

TANDEM ROUND GALVANISED



SPAN (MM)	WIDTH (MM)				
	200	225	250	275	300
1200	CTGA12020	CTGA12022	CTGA12025	CTGA12027	CTGA12030
1300	CTGA13020	CTGA13022	CTGA13025	CTGA13027	CTGA13030
1400	CTGA14020	CTGA14022	CTGA14025	CTGA14027	CTGA14030
1500	CTGA15020	CTGA15022	CTGA15025	CTGA15027	CTGA15030
1600	CTGA16020	CTGA16022	CTGA16025	CTGA16027	CTGA16030
1700	CTGA17020	CTGA17022	CTGA17025	CTGA17027	CTGA17030
1800	CTGA18020	CTGA18022	CTGA18025	CTGA18027	CTGA18030
1900	CTGA19020	CTGA19022	CTGA19025	CTGA19027	CTGA19030

TANDEM FLAT TOP GALVANISED



SPAN (MM)	WIDTH (MM)				
	200	225	250	275	300
1200	CTGAF12020	CTGAF12022	CTGAF12025	CTGAF12027	CTGAF12030
1300	CTGAF13020	CTGAF13022	CTGAF13025	CTGAF13027	CTGAF13030
1400	CTGAF14020	CTGAF14022	CTGAF14025	CTGAF14027	CTGAF14030
1500	CTGAF15020	CTGAF15022	CTGAF15025	CTGAF15027	CTGAF15030
1600	CTGAF16020	CTGAF16022	CTGAF16025	CTGAF16027	CTGAF16030
1700	CTGAF17020	CTGAF17022	CTGAF17025	CTGAF17027	CTGAF17030
1800	CTGAF18020	CTGAF18022	CTGAF18025	CTGAF18027	CTGAF18030
1900	CTGAF19020	CTGAF19022	CTGAF19025	CTGAF19027	CTGAF19030

STAINLESS STEEL

TANDEM ROUND STAINLESS STEEL

Standard material is 1.2mm stainless steel 304 bright annealed (BA) finish.



SPAN (MM)	WIDTH (MM)				
	200	225	250	275	300
1200	CTST12020	CTST12022	CTST12025	CTST12027	CTST12030
1300	CTST13020	CTST13022	CTST13025	CTST13027	CTST13030
1400	CTST14020	CTST14022	CTST14025	CTST14027	CTST14030
1500	CTST15020	CTST15022	CTST15025	CTST15027	CTST15030
1600	CTST16020	CTST16022	CTST16025	CTST16027	CTST16030
1700	CTST17020	CTST17022	CTST17025	CTST17027	CTST17030
1800	CTST18020	CTST18022	CTST18025	CTST18027	CTST18030
1900	CTST19020	CTST19022	CTST19025	CTST19027	CTST19030



SIZING

Teardrop guards are available in tandem or triaxle sizes for bulk orders only.

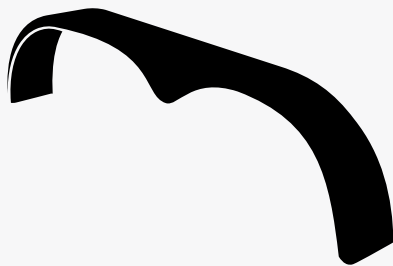
MATERIALS

Material options include:

- Alloy Smooth - Standard alloy material is 3mm aluminium smooth, Grade 5005 Temper H32.
- Alloy Propellor or Alloy 5 Bar Treadplate,
- Bare Steel - Standard material is 1.6mm cold rolled bare steel. 2mm on request.
- Galvanised Steel - Standard material is 1.6mm galvanised steel. 2mm on request.

TANDEM TEARDROP ROUND

Select a material from above and either a round or flat top design then determine sizing.



SPAN (MM)	WIDTH (MM)				
	200	225	250	275	300
1200	12020TD	12022TD	12025TD	12027TD	12030TD
1300	13020TD	13022TD	13025TD	13027TD	13030TD
1400	14020TD	14022TD	14025TD	14027TD	14030TD
1500	15020TD	15022TD	15025TD	15027TD	15030TD
1600	16020TD	16022TD	16025TD	16027TD	16030TD
1700	17020TD	17022TD	17025TD	17027TD	17030TD
1800	18020TD	18022TD	18025TD	18027TD	18030TD
1900	19020TD	19022TD	19025TD	19027TD	19030TD



ALLOY SMOOTH

Standard alloy material is 3mm aluminium smooth, Grade 5005 Temper H32.

TRIAXLE ROUND ALUMINIUM SMOOTH



SPAN (MM)	WIDTH (MM)				
	200	225	250	275	300
2200	CTALS22020	CTALS22022	CTALS22025	CTALS22027	CTALS22030
2300	CTALS23020	CTALS23022	CTALS23025	CTALS23027	CTALS23030
2400	CTALS24020	CTALS24022	CTALS24025	CTALS24027	CTALS24030
2500	CTALS25020	CTALS25022	CTALS25025	CTALS25027	CTALS25030
2600	CTALS26020	CTALS26022	CTALS26025	CTALS26027	CTALS26030

TRIAXLE FLAT TOP ALUMINIUM SMOOTH



SPAN (MM)	WIDTH (MM)				
	200	225	250	275	300
2200	CTALSF22020	CTALSF22022	CTALSF22025	CTALSF22027	CTALSF22030
2300	CTALSF23020	CTALSF23022	CTALSF23025	CTALSF23027	CTALSF23030
2400	CTALSF24020	CTALSF24022	CTALSF24025	CTALSF24027	CTALSF24030
2500	CTALSF25020	CTALSF25022	CTALSF25025	CTALSF25027	CTALSF25030
2600	CTALSF26020	CTALSF26022	CTALSF26025	CTALSF26027	CTALSF26030

ALLOY PROPELLOR

Standard material is 3mm aluminium propellor checkerplate, Grade 3003 Temper H224.

TRIAXLE ROUND ALUMINIUM PROPELLOR PLATE



SPAN (MM)	WIDTH (MM)				
	200	225	250	275	300
2200	CTALPR22020	CTALPR22022	CTALPR22025	CTALPR22027	CTALPR22030
2300	CTALPR23020	CTALPR23022	CTALPR23025	CTALPR23027	CTALPR23030
2400	CTALPR24020	CTALPR24022	CTALPR24025	CTALPR24027	CTALPR24030
2500	CTALPR25020	CTALPR25022	CTALPR25025	CTALPR25027	CTALPR25030
2600	CTALPR26020	CTALPR26022	CTALPR26025	CTALPR26027	CTALPR26030

TRIAXLE FLAT TOP ALUMINIUM PROPELLOR PLATE



SPAN (MM)	WIDTH (MM)				
	200	225	250	275	300
2200	CTALPRF22020	CTALPRF22022	CTALPRF22025	CTALPRF22027	CTALPRF22030
2300	CTALPRF23020	CTALPRF23022	CTALPRF23025	CTALPRF23027	CTALPRF23030
2400	CTALPRF24020	CTALPRF24022	CTALPRF24025	CTALPRF24027	CTALPRF24030
2500	CTALPRF25020	CTALPRF25022	CTALPRF25025	CTALPRF25027	CTALPRF25030
2600	CTALPRF26020	CTALPRF26022	CTALPRF26025	CTALPRF26027	CTALPRF26030



BARE STEEL

Standard material is 1.6mm cold rolled bare steel. 2mm available on request.

TRIAXLE ROUND BARE STEEL



SPAN (MM)	WIDTH (MM)				
	200	225	250	275	300
2200	CTBC22020	CTBC22022	CTBC22025	CTBC22027	CTBC22030
2300	CTBC23020	CTBC23022	CTBC23025	CTBC23027	CTBC23030
2400	CTBC24020	CTBC24022	CTBC24025	CTBC24027	CTBC24030
2500	CTBC25020	CTBC25022	CTBC25025	CTBC25027	CTBC25030
2600	CTBC26020	CTBC26022	CTBC26025	CTBC26027	CTBC26030

TRIAXLE FLAT TOP BARE STEEL



SPAN (MM)	WIDTH (MM)				
	200	225	250	275	300
2200	CTBCF22020	CTBCF22022	CTBCF22025	CTBCF22027	CTBCF22030
2300	CTBCF23020	CTBCF23022	CTBCF23025	CTBCF23027	CTBCF23030
2400	CTBCF24020	CTBCF24022	CTBCF24025	CTBCF24027	CTBCF24030
2500	CTBCF25020	CTBCF25022	CTBCF25025	CTBCF25027	CTBCF25030
2600	CTBCF26020	CTBCF26022	CTBCF26025	CTBCF26027	CTBCF26030

GALVANISED STEEL

Standard material is 1.6mm galvanised steel. 2mm on request.

TRIAXLE ROUND GALVANISED



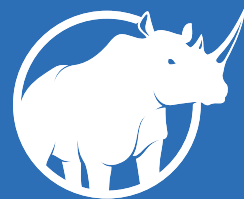
SPAN (MM)	WIDTH (MM)				
	200	225	250	275	300
2200	CTGA22020	CTGA22022	CTGA22025	CTGA22027	CTGA22030
2300	CTGA23020	CTGA23022	CTGA23025	CTGA23027	CTGA23030
2400	CTGA24020	CTGA24022	CTGA24025	CTGA24027	CTGA24030
2500	CTGA25020	CTGA25022	CTGA25025	CTGA25027	CTGA25030
2600	CTGA26020	CTGA26022	CTGA26025	CTGA26027	CTGA26030

TRIAXLE FLAT TOP GALVANISED



SPAN (MM)	WIDTH (MM)				
	200	225	250	275	300
2200	CTGAF22020	CTGAF22022	CTGAF22025	CTGAF22027	CTGAF22030
2300	CTGAF23020	CTGAF23022	CTGAF23025	CTGAF23027	CTGAF23030
2400	CTGAF24020	CTGAF24022	CTGAF24025	CTGAF24027	CTGAF24030
2500	CTGAF25020	CTGAF25022	CTGAF25025	CTGAF25027	CTGAF25030
2600	CTGAF26020	CTGAF26022	CTGAF26025	CTGAF26027	CTGAF26030

LIGHT TRAILER PRODUCT CATALOGUE



RHINO